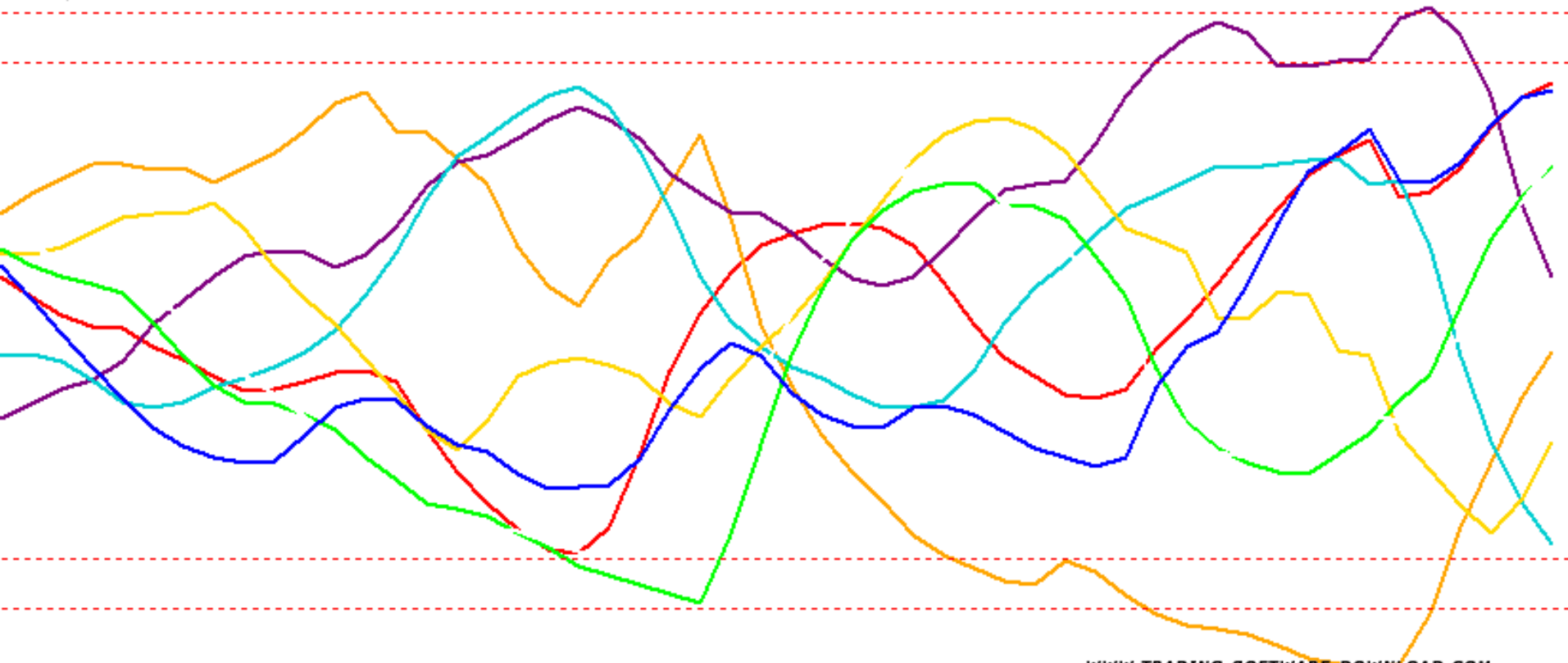




UNDERSTANDING STRENGTH, WEAKNESS, & VOLUME NOW THAT'S TRADING

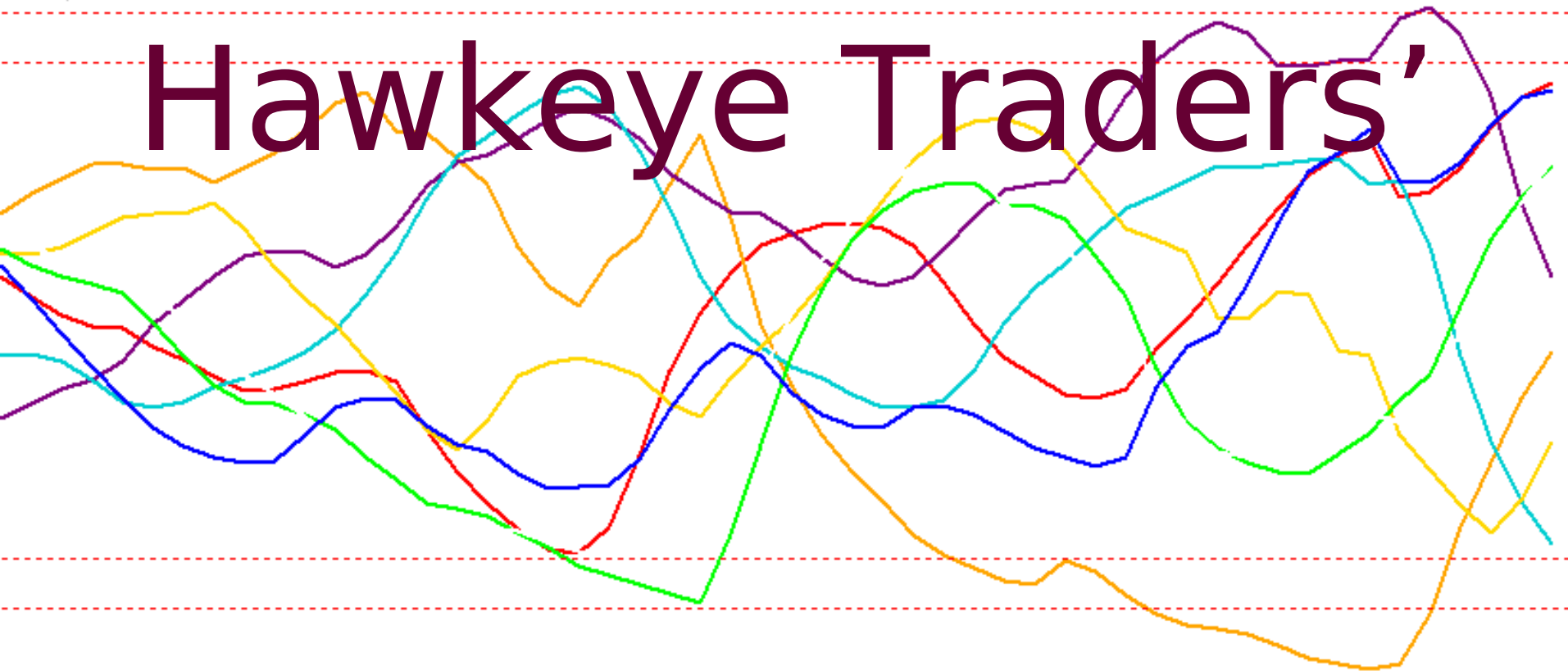




UNDERSTANDING STRENGTH, WEAKNESS, & VOLUME

NOW THAT'S TRADING

Hawkeye Traders'





UNDERSTANDING STRENGTH, WEAKNESS, & VOLUME

NOW THAT'S TRADING

Hawkeye Traders'

FATMAN!



UNDERSTANDING STRENGTH, WEAKNESS, & VOLUME NOW THAT'S TRADING

Why Do You Trade?

- For financial security?
- One thing's for sure: you don't trade to lose.

Let's see if we can get you an...

EDGE!



NZDCAD, M15

Hawkeye FATMAN

AUD CAD CHF EUR GBP JPY NZD USD

← Each color identifies a single currency below.

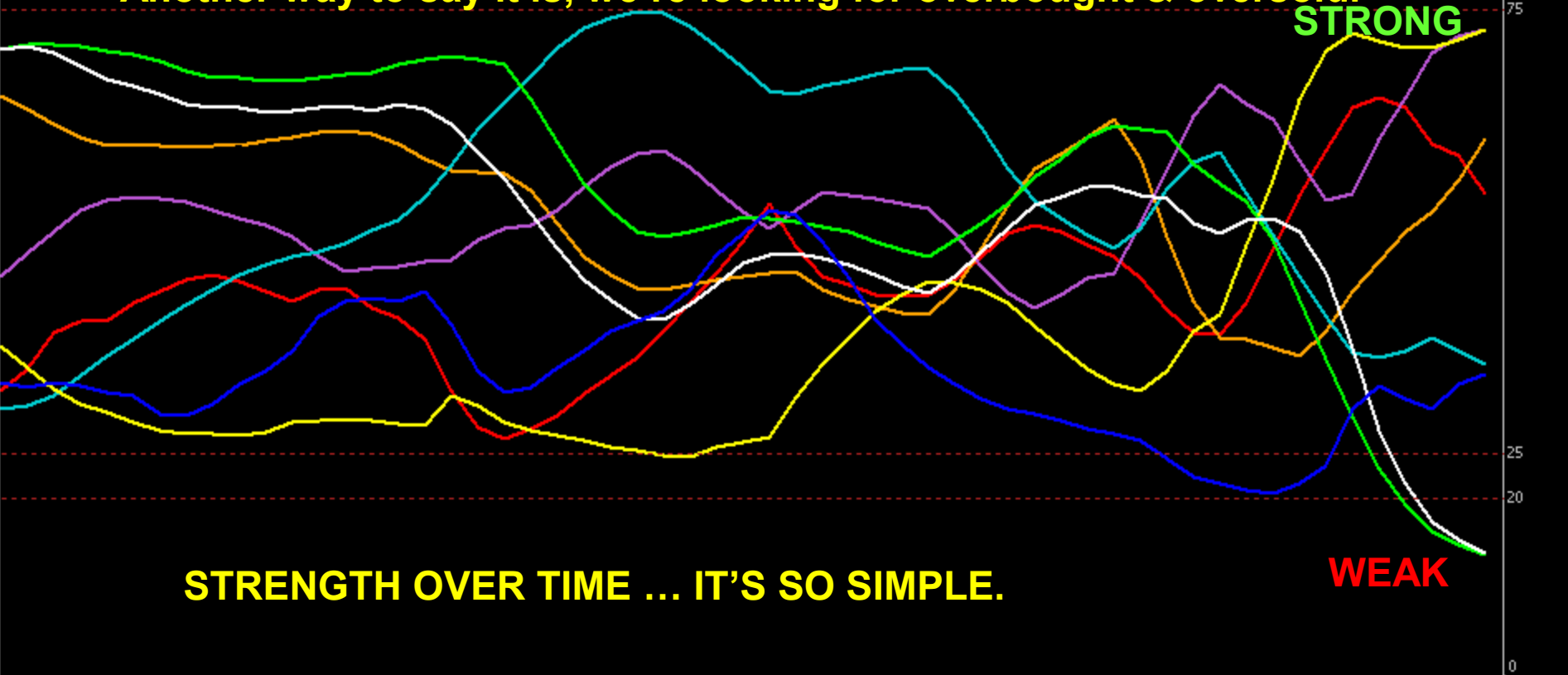
Hawkeye Fatman 27.2736 55.6491 72.6475 55.8034 15.2229 68.6078 55.1076 46.0250

Fatman is plotting strength over time.

We're looking for extremes.

Another way to say it is, we're looking for overbought & oversold.

STRONG



STRENGTH OVER TIME ... IT'S SO SIMPLE.

WEAK



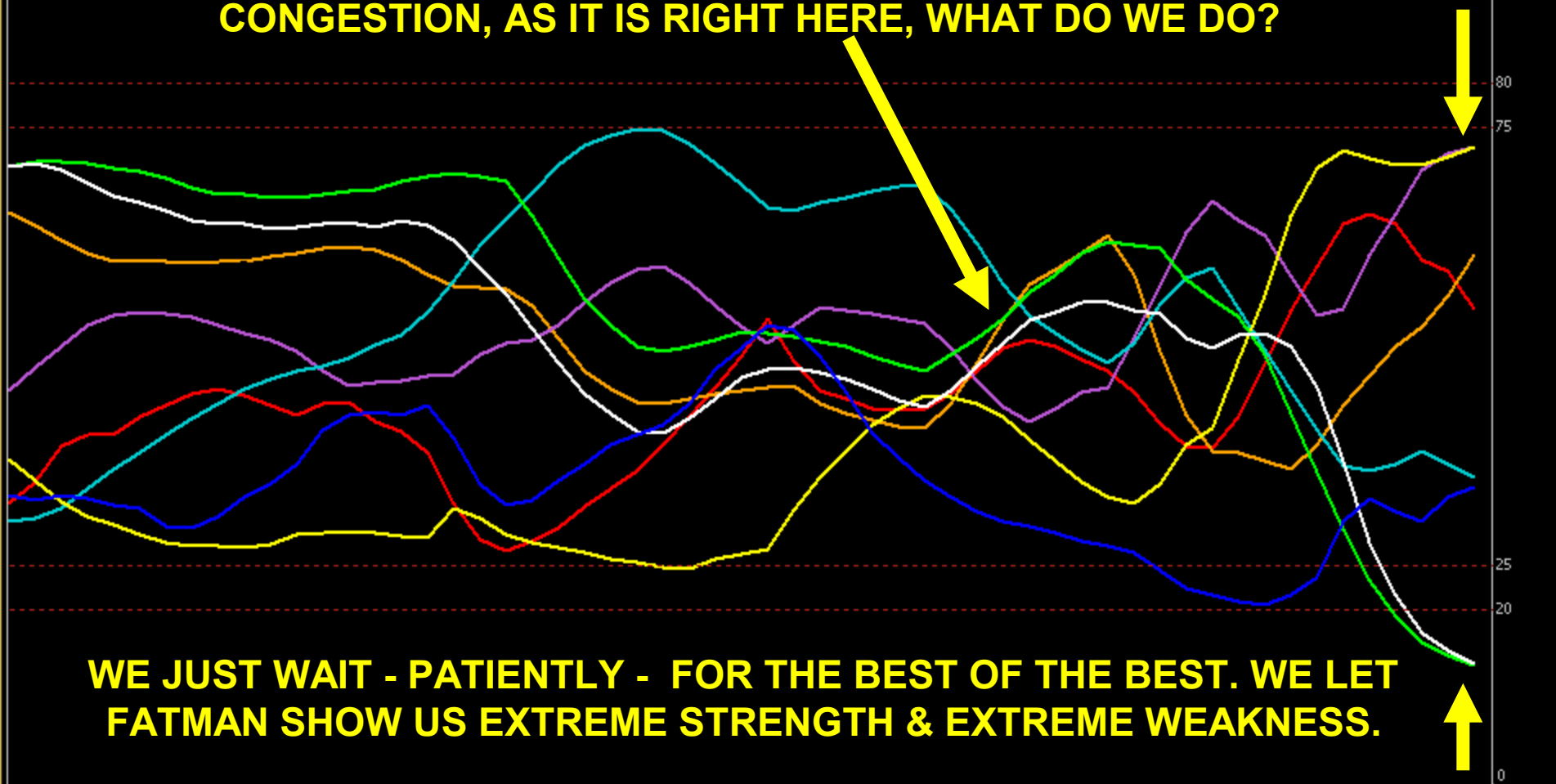
NZDCAD, M15

Hawkeye FATMAN

AUD CAD CHF EUR GBP JPY NZD USD

Hawkeye Fatman 27.2736 55.6491 72.6475 55.8034 15.2229 68.6078 55.1076 46.0250

AND IF FATMAN IS CURRENTLY SHOWING US AN AREA OF CONGESTION, AS IT IS RIGHT HERE, WHAT DO WE DO?

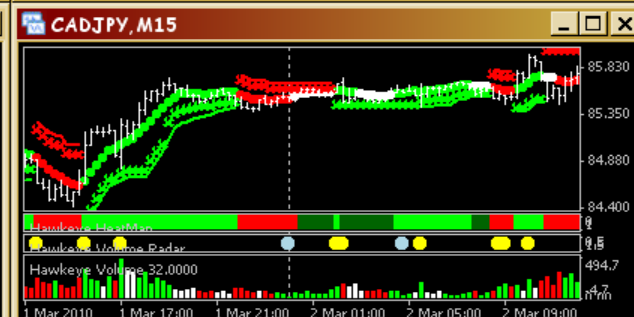
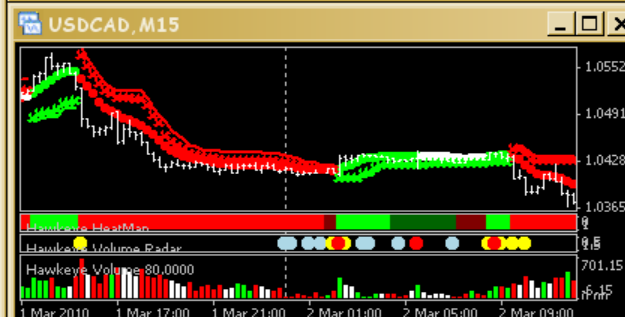
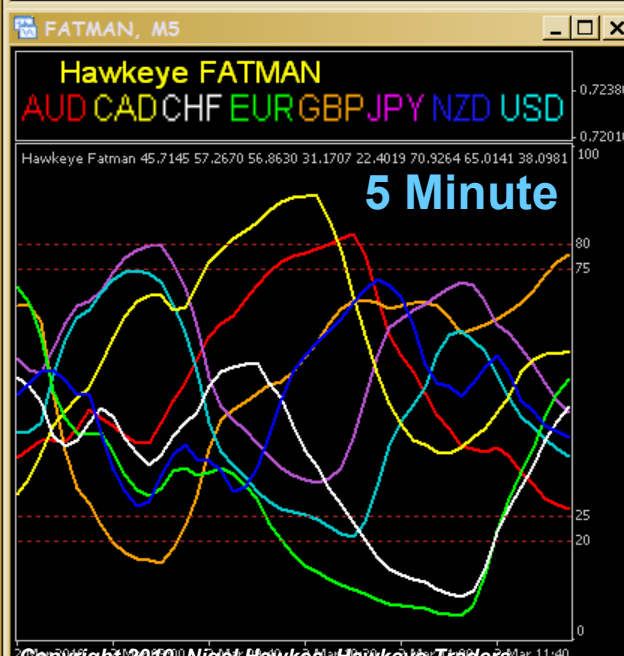
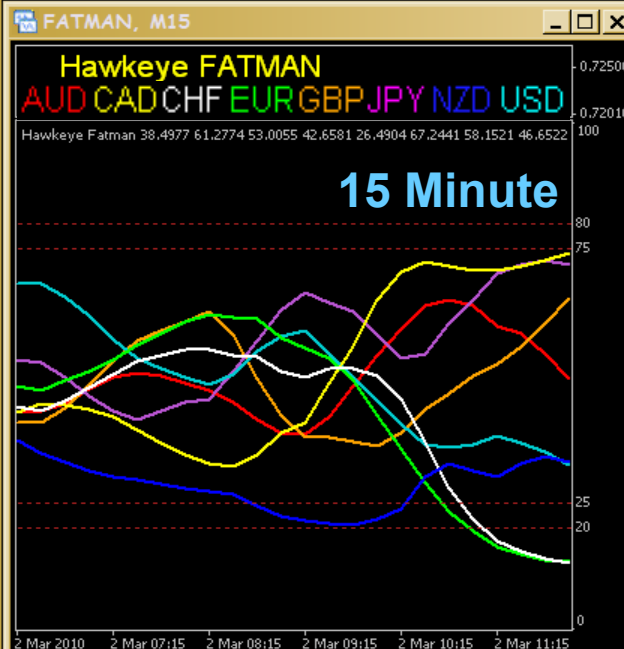


WE JUST WAIT - PATIENTLY - FOR THE BEST OF THE BEST. WE LET FATMAN SHOW US EXTREME STRENGTH & EXTREME WEAKNESS.



UNDERSTANDING STRENGTH, WEAKNESS, & VOLUME NOW THAT'S TRADING

Now let's see how **FATMAN** is
actually used when integrated with
a normal trading window view.

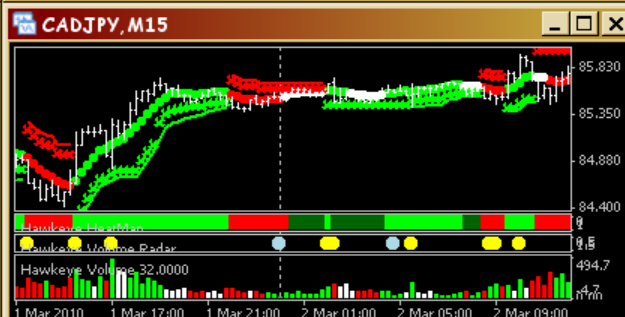
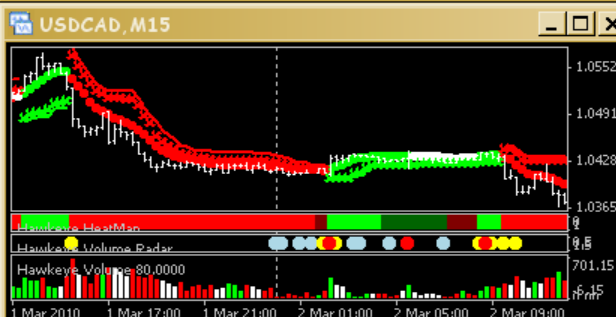
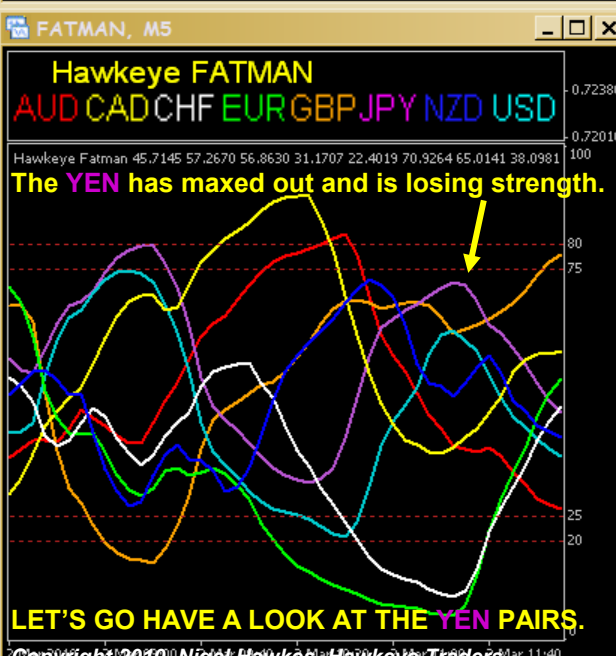
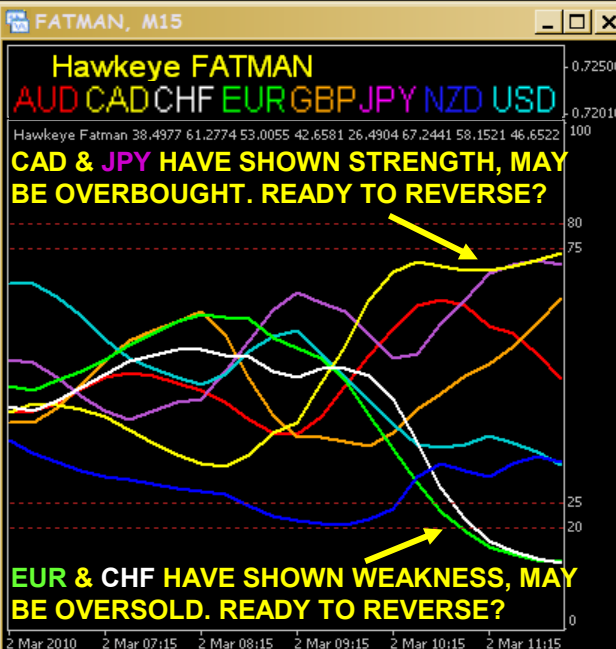




UNDERSTANDING STRENGTH, WEAKNESS, & VOLUME

NOW THAT'S TRADING

- In the next chart (15min), we'll see how **FATMAN** identifies strength vs weakness.
- We'll use the 15min chart to get us in the ballpark, and then we'll use the 5min chart to help us narrow down which currencies are strong and weak.





UNDERSTANDING STRENGTH, WEAKNESS, & VOLUME

NOW THAT'S TRADING

- So the 5min **FATMAN** confirms that the **Yen** has already begun losing strength.
- So we know it's the **Yen** versus anything.
- Let's look at only the **Yen** pairs to see if we can find a trade.

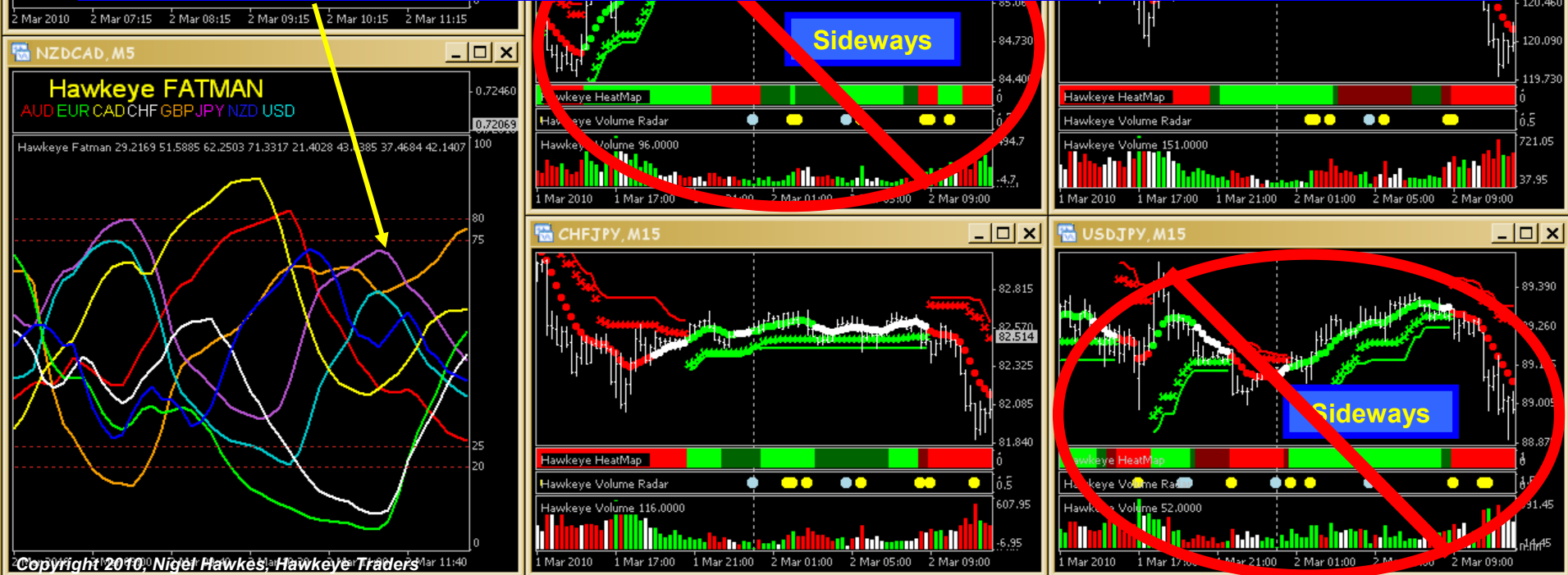


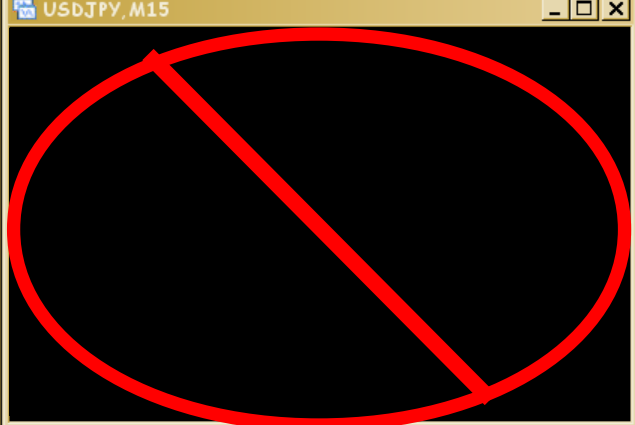
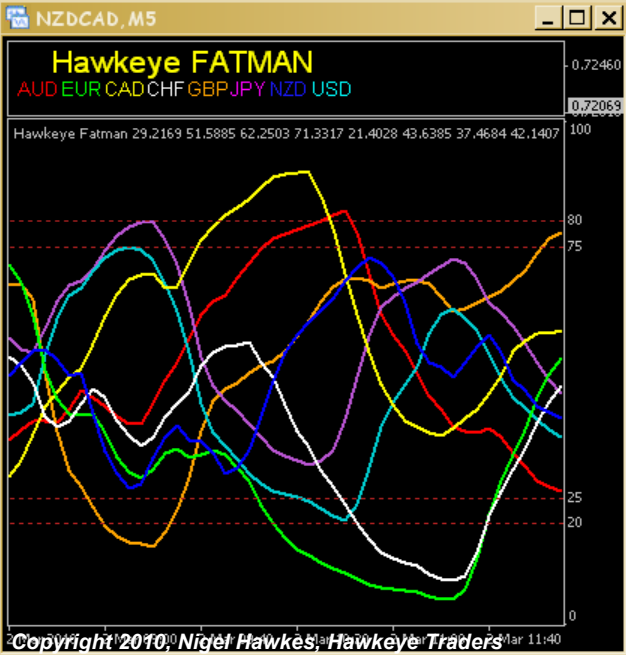
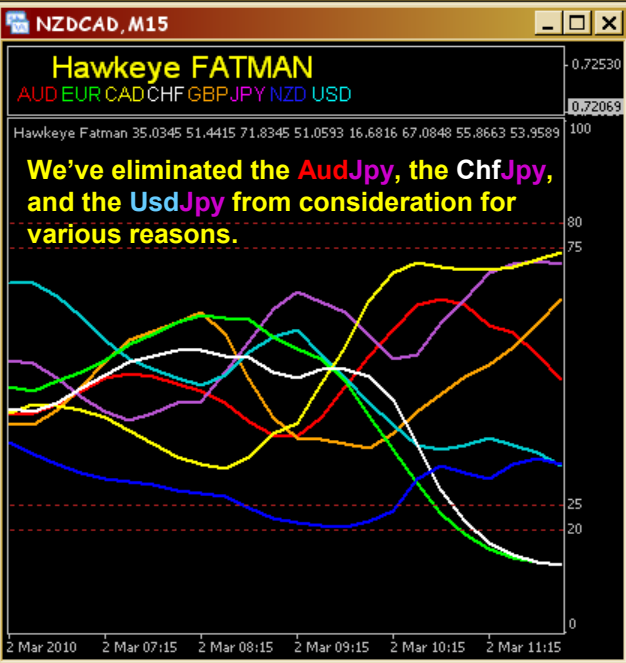
UNDERSTANDING STRENGTH, WEAKNESS, & VOLUME NOW THAT'S TRADING

- We have a layout that specifically shows only **Yen Pairs**... **AudJpy**, **CadJpy**, **ChfJpy**, **GbpJpy**, **EurJpy**, and **UsdJpy**.
- We're going to look for a pair that has had a long run to the downside (**Yen** strength), may be ready to reverse, and then we'll eliminate those that haven't reversed or are just moving sideways.



Here's Our Yen-Pairs-Only Layout







UNDERSTANDING STRENGTH, WEAKNESS, & VOLUME

NOW THAT'S TRADING

- Now, what's left?
- The **ChfJpy**, the **GbpJpy**, and the **EurJpy**.
- Next thing to do: check with the 5 minute **FATMAN** to see if we can further eliminate any pairs.



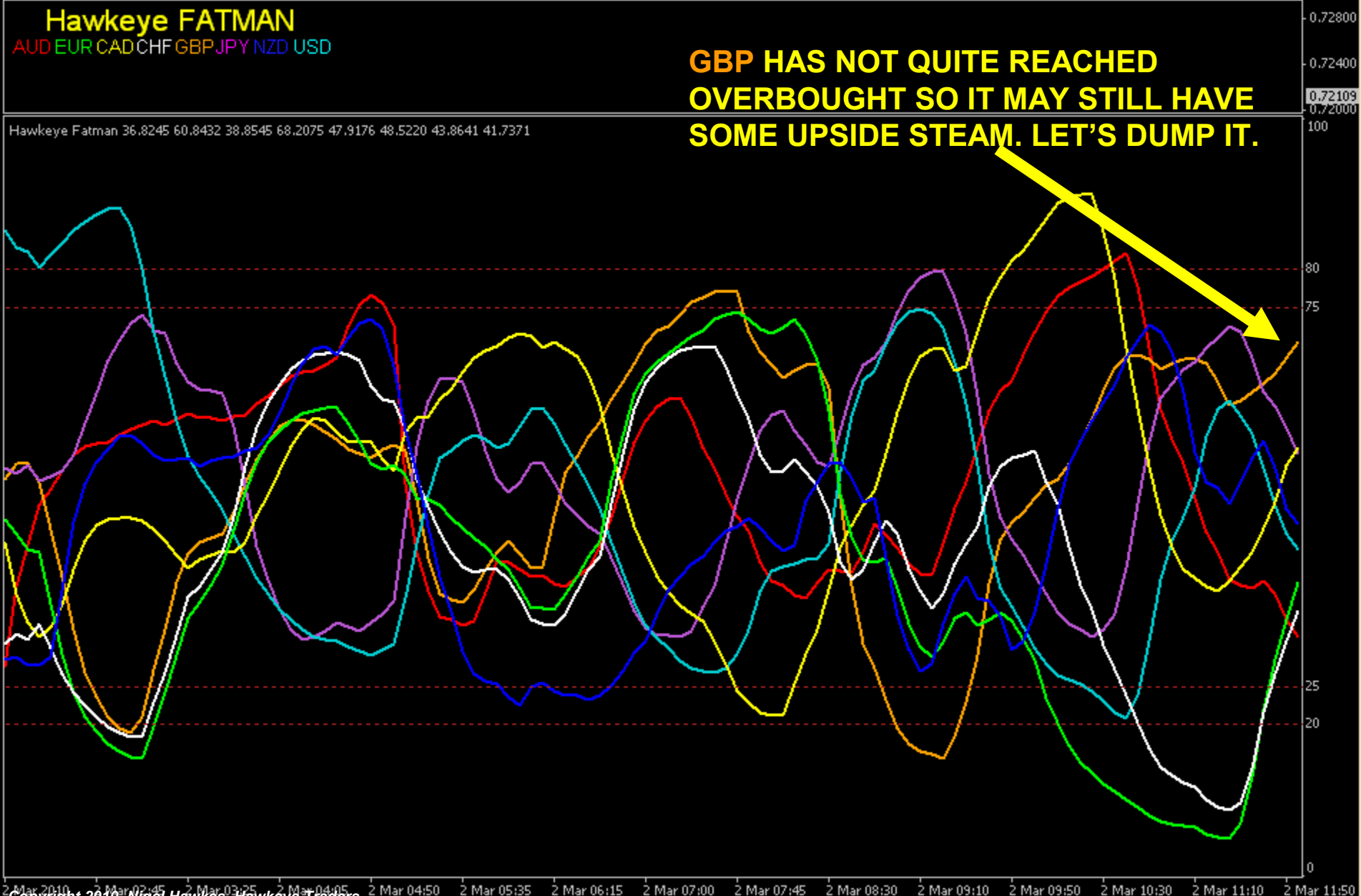
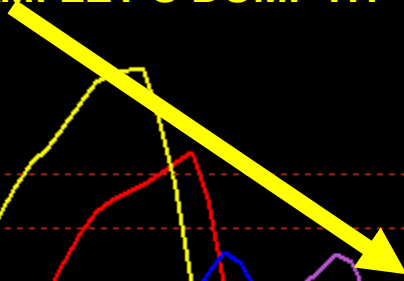
NZDCAD, M5

Hawkeye FATMAN

AUD EUR CAD CHF GBP JPY NZD USD

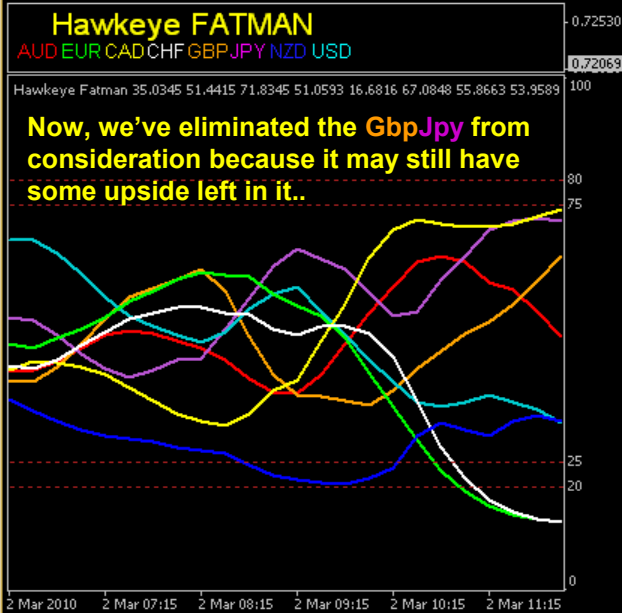
Hawkeye Fatman 36.8245 60.8432 38.8545 68.2075 47.9176 48.5220 43.8641 41.7371

GBP HAS NOT QUITE REACHED OVERBOUGHT SO IT MAY STILL HAVE SOME UPSIDE STEAM. LET'S DUMP IT.

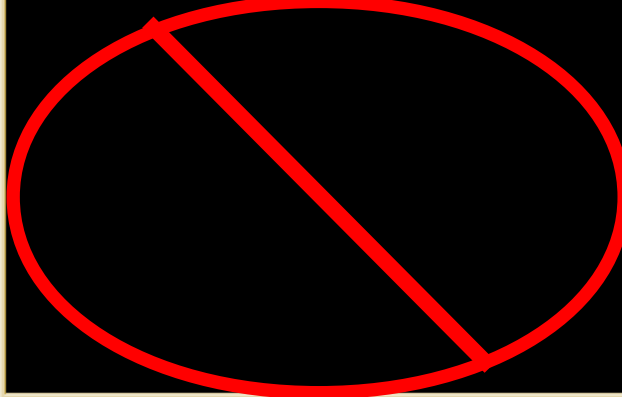




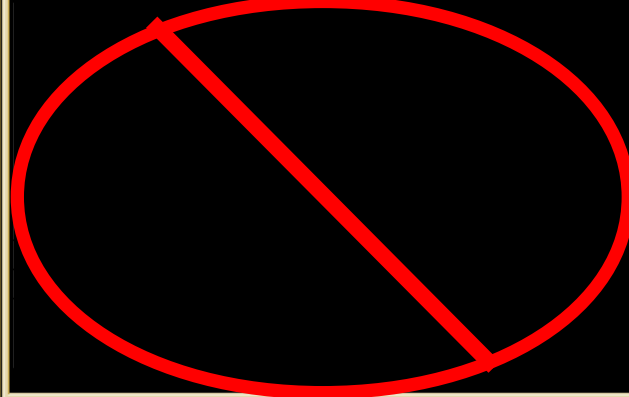
NZDCAD, M15



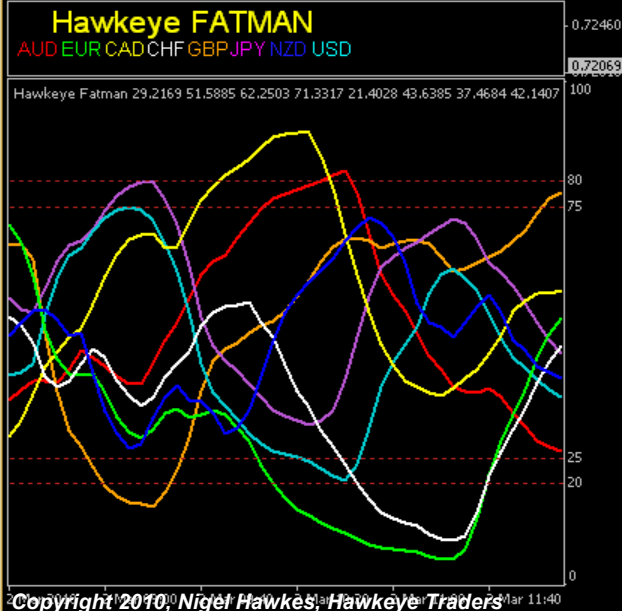
AUDJPY, M15



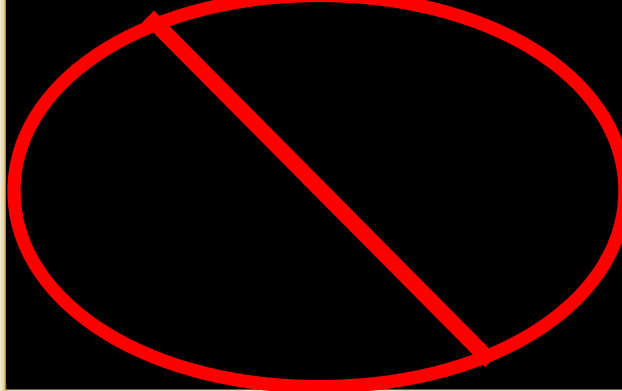
GBPJPY, M15



NZDCAD, M5



CADJPY, M15



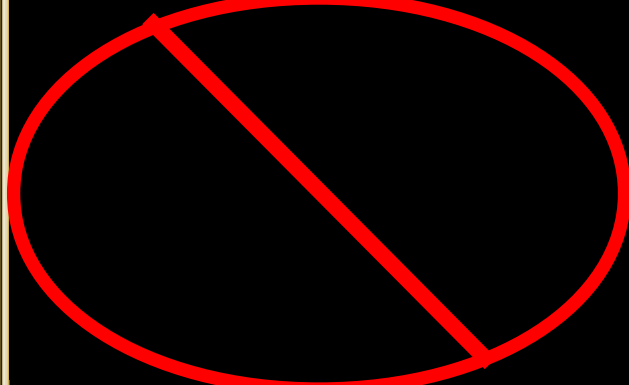
EURJPY, M15



CHFJPY, M15



UsbJPY, M15



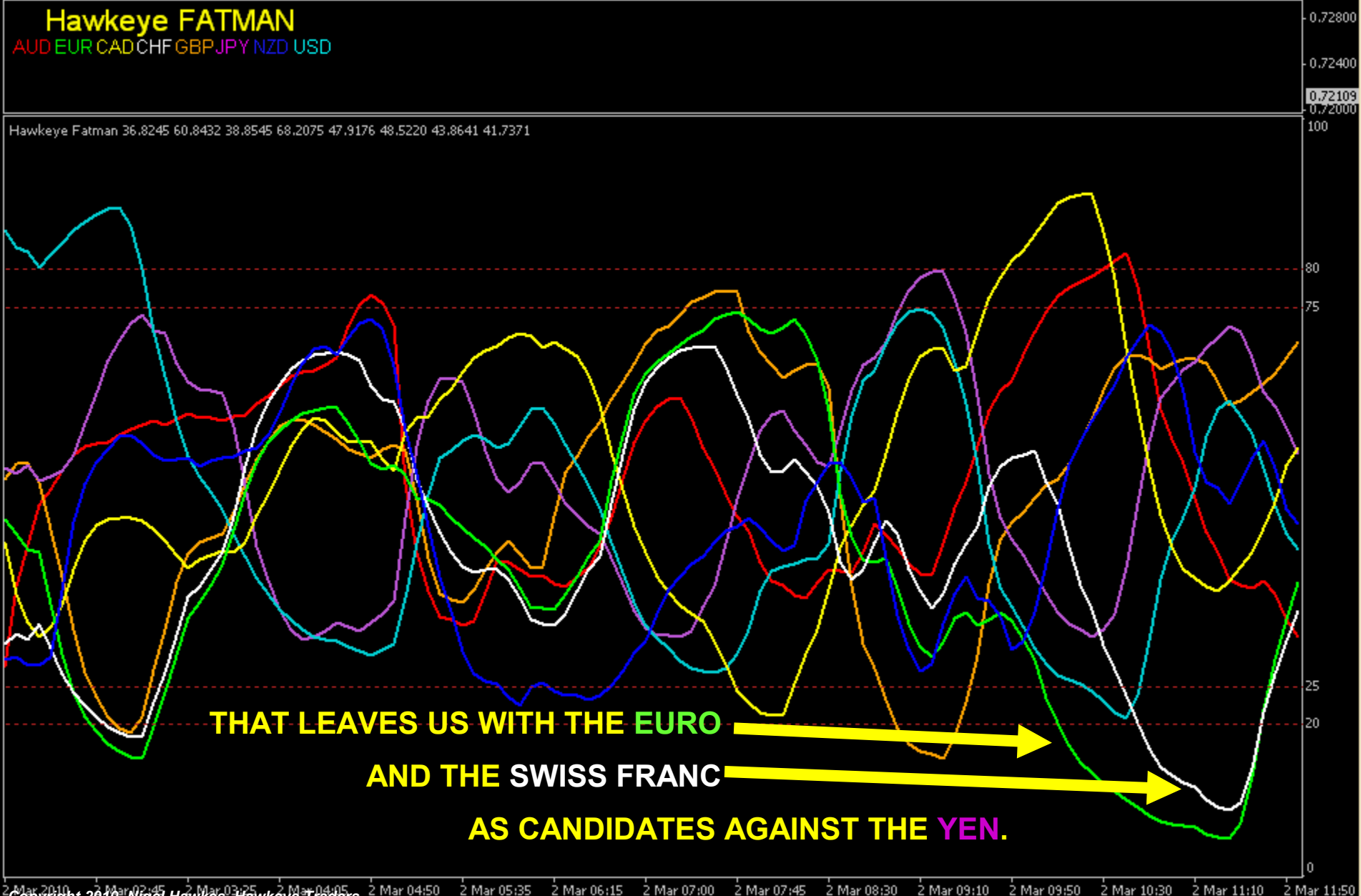


NZDCAD, M5

Hawkeye FATMAN

AUD EUR CAD CHF GBP JPY NZD USD

Hawkeye Fatman 36.8245 60.8432 38.8545 68.2075 47.9176 48.5220 43.8641 41.7371

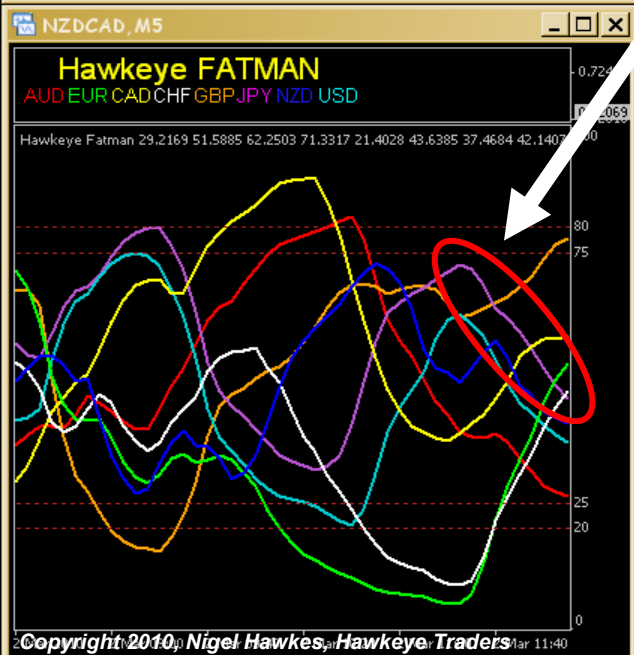
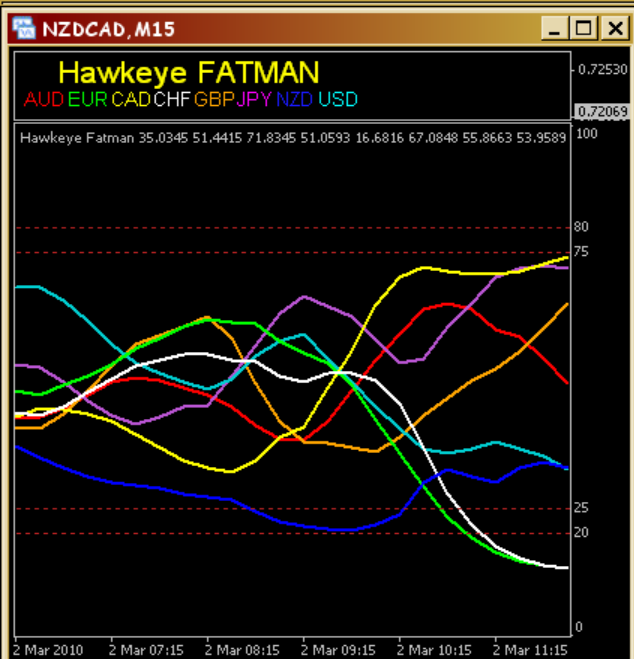


THAT LEAVES US WITH THE EURO →
AND THE SWISS FRANC →
AS CANDIDATES AGAINST THE YEN.



UNDERSTANDING STRENGTH, WEAKNESS, & VOLUME NOW THAT'S TRADING

- **So what pairs are those?**
- **The ChfJpy and the EurJpy.**
- **Next thing to do: Examine the 5 minute charts for the best of the best.**

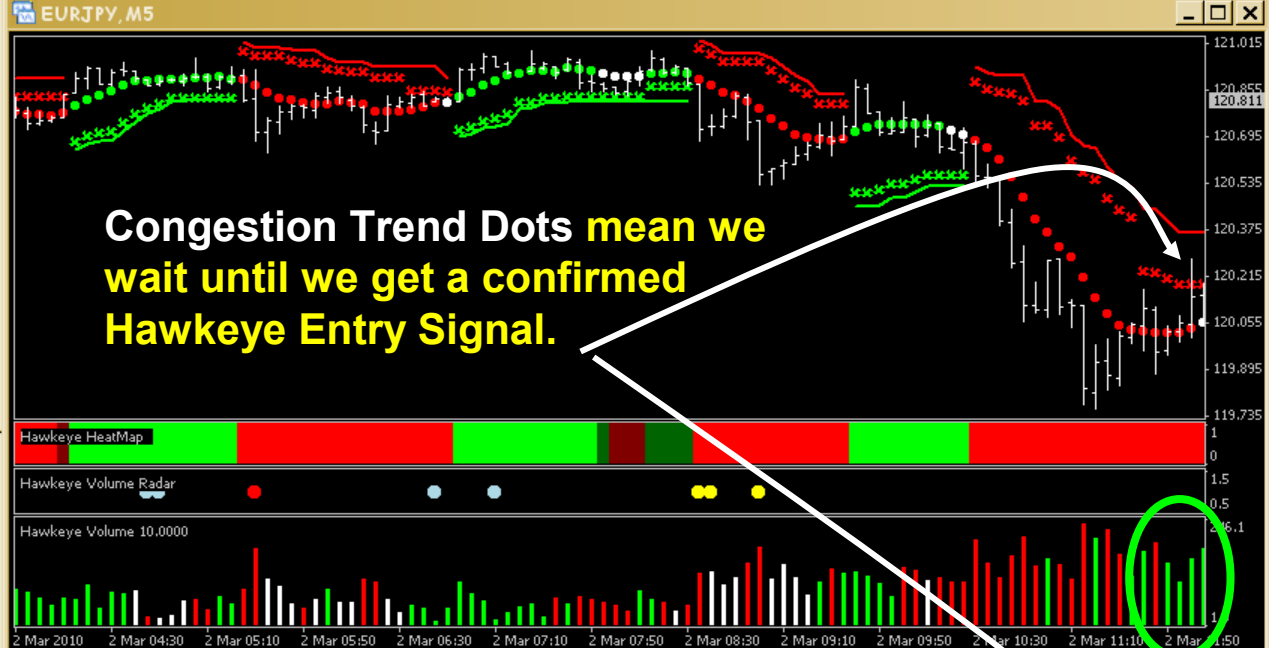
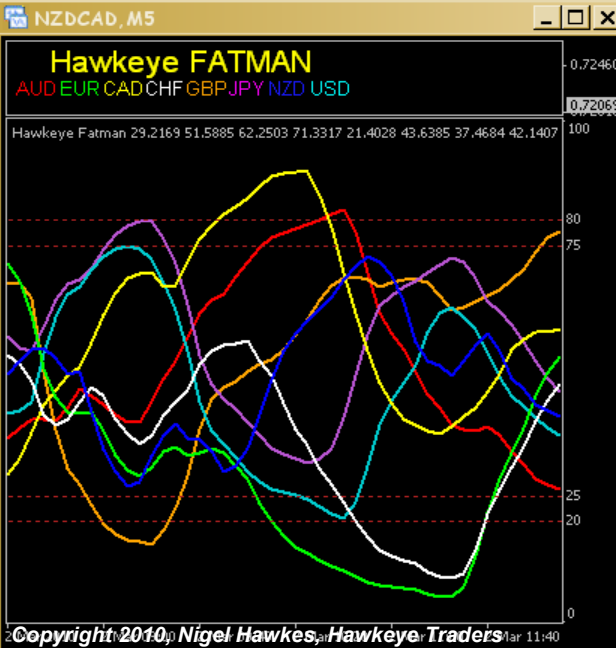
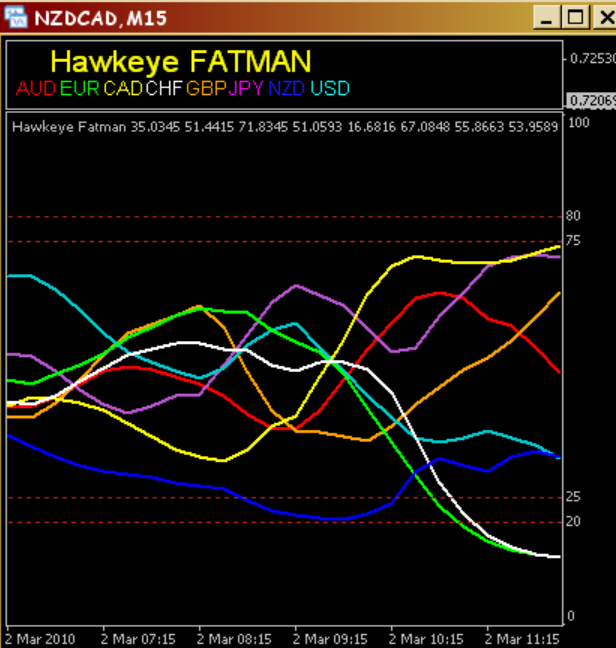




UNDERSTANDING STRENGTH, WEAKNESS, & VOLUME

NOW THAT'S TRADING

- **But, do we just get in now? NO!!!!**
- **If we don't get in now, then when?**
- **Well, we see that the trend may have reversed...**
- **And Buyers have been coming into the market as is evidenced by our Hawkeye Volume Indicator...**
- **And, on both charts, we see our white Hawkeye Congestion Trend Dots...**



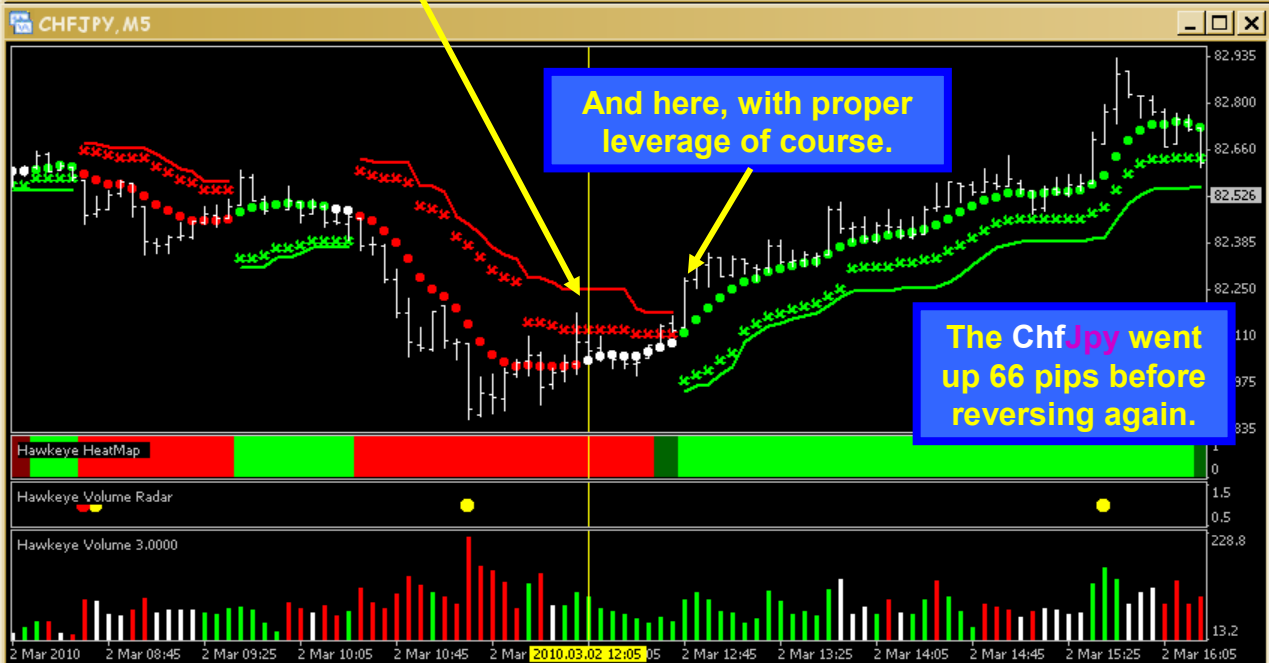
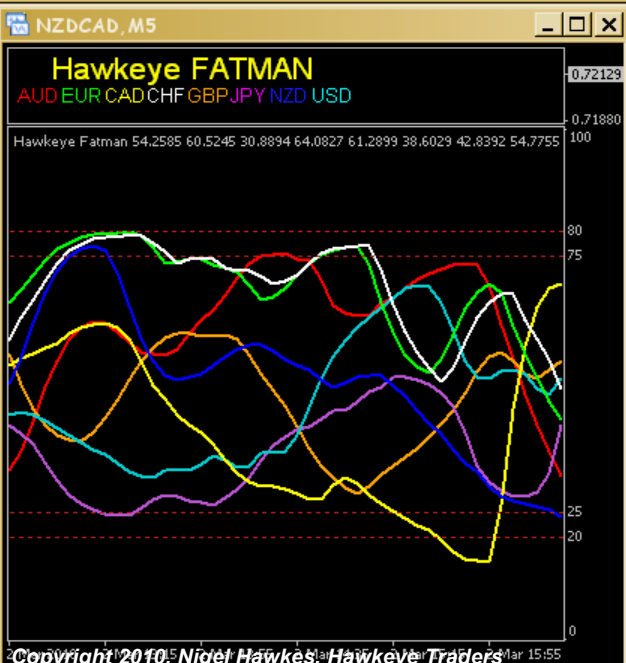
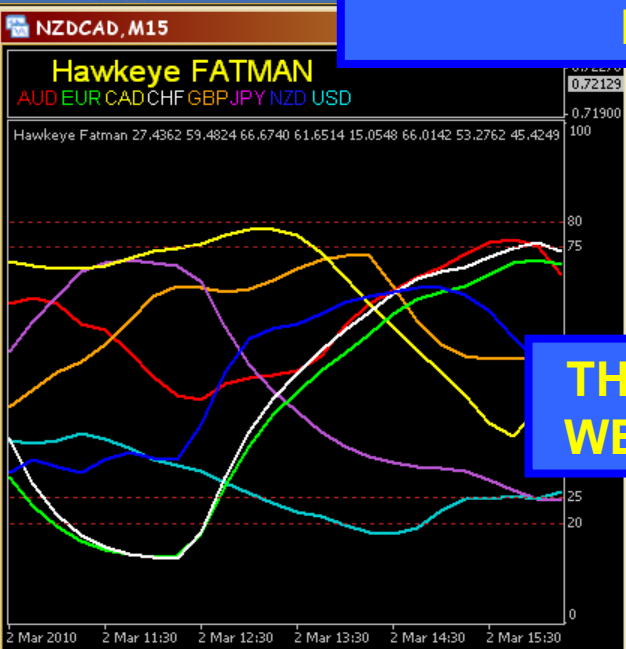


UNDERSTANDING STRENGTH, WEAKNESS, & VOLUME NOW THAT'S TRADING

- **Now, we WAIT for a confirmed Hawkeye Signal**
- **Patience, You're a Hunter...**



FATMAN PICKED THEM BOTH!





UNDERSTANDING STRENGTH, WEAKNESS, & VOLUME

NOW THAT'S TRADING

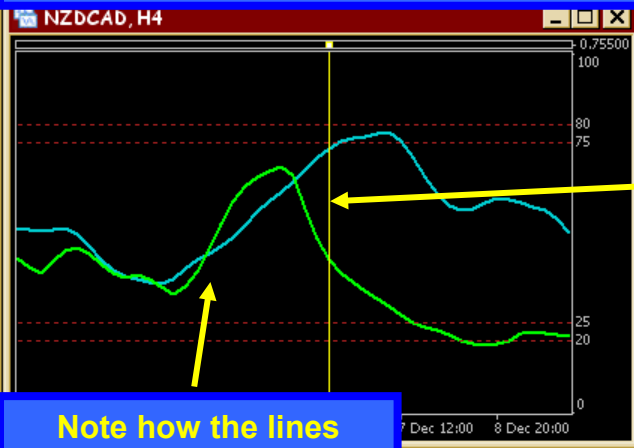
- Wondering if **FATMAN** can do more than scalp?
- How about swing or position trading... 4Hr? Day?? Longer???
- What if you could have gotten into the Euro's recent collapse at the beginning?



UNDERSTANDING STRENGTH, WEAKNESS, & VOLUME NOW THAT'S TRADING

- In the next slide, you're going to see something remarkable.
- We've shutoff all the other currencies and highlighted just the **Eur** and the **Usd**.

FATMAN Called It: Days Before the Daily, Weeks Before the Weekly!



Note how the lines were twisted, braided, and moving together,.

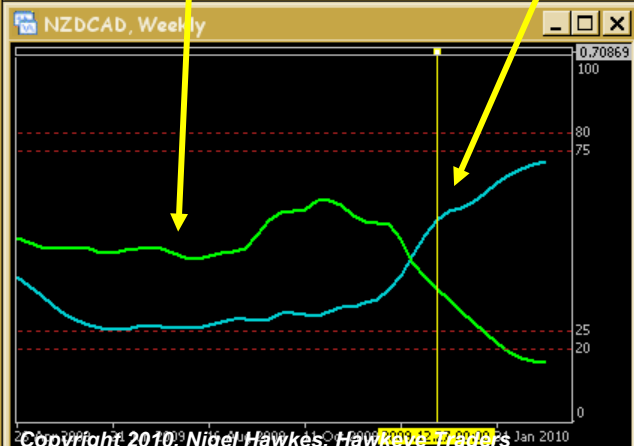
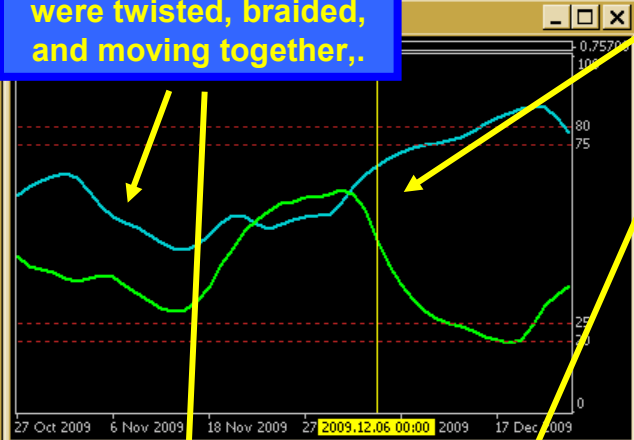


Finally, they spilt apart and the pair collapsed.

We could have gotten in here, on 12/4/2009...

The reversal didn't show up here for days or weeks but FATMAN called it on the 4-hr chart.

...days and weeks ahead of the standard entry.





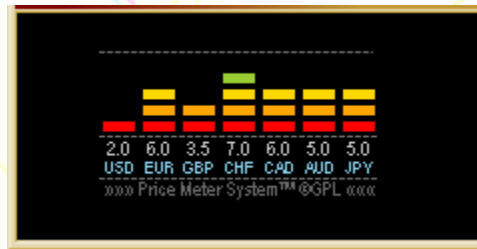
UNDERSTANDING STRENGTH, WEAKNESS, & VOLUME NOW THAT'S TRADING

- **Now, what?**
- **We showed you THE EDGE,**
- **One that reduces your risk.**
- **Need more proof? Let's look at the competition...**



UNDERSTANDING STRENGTH, WEAKNESS, & VOLUME NOW THAT'S TRADING

- Here's a typical strength meter, freely available on the internet...



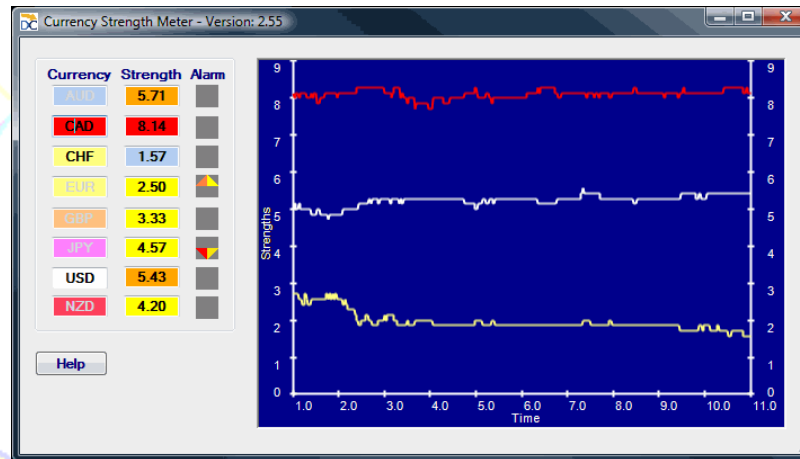
- Does it show trend? Does it show history? Are they getting stronger or weaker? Can you BACKTEST IT???

No-0000.



UNDERSTANDING STRENGTH, WEAKNESS, & VOLUME NOW THAT'S TRADING

- **Need more proof? Here's another, very expensive one...**



- **Can you put all 8 on one chart and figure out who's strong and who's weak?? Can you BACKTEST IT???**

No-oooo.



UNDERSTANDING STRENGTH, WEAKNESS, & VOLUME NOW THAT'S TRADING

- **Need still more convincing? One last competitor.**
- **Let's see if it can answer any of these questions...**
- **Does it show trend? Does it show history? Are they getting stronger or weaker? Can you BACKTEST IT???**



Pair	Weights													
	Euro/Dollar	Pound/Dollar	Dollar/swiss	Loonie/Dollar	EUR/USD	GBP/USD	AUD/USD	USD/JPY	USD/CHF	USD/CAD	EUR/AUD	EUR/CAD	EUR/CHF	EUR/GBP
High	1.3612	1.5518	0.9011	91.2810	1.0765	1.0432	1.5115	1.4193	1.4634	0.8786	124.2310			
Ask	1.3601	1.5494	0.9003	91.1350	1.0758	1.0429	1.5111	1.4184	1.4631	0.8780	123.9470			
Bid	1.3599	1.5491	0.9000	91.1140	1.0755	1.0426	1.5107	1.4178	1.4628	0.8777	123.9180			
Low	1.3588	1.5475	0.8993	91.1090	1.0745	1.0413	1.5092	1.4169	1.4617	0.8768	123.9090			

PIP Range	24	43	18	17	19	19	23	24	16	19	32
Bid Ratio	46.4%	38.4%	39.4%	2.9%	50.0%	66.7%	65.8%	37.5%	64.6%	52.2%	2.8%

Relative Strength	EUR	GBP	AUD	USD	USD	USD	EUR	EUR	EUR	EUR	EUR
	4	3	3	0	5	6	6	3	6	5	0
	USD	USD	USD	JPY	CHF	CAD	AUD	CAD	CHF	GBP	JPY
5	6	6	9	4	3	3	6	3	4	9	

Total Strength	USD	EUR	GBP	CHF	CAD	AUD	JPY	NZD	
	4.6	4.0	3.0	3.0	4.67	2.8	8.0	5.0	Strong
									Rising
# of evaluation points	7	6	4	3	3	4	5	1	Neutral
	-1				5				Weak

Relative Strength1	GBP	GBP	NZD	AUD	AUD	CHF
	2	3	5	4	1	2
	JPY	CHF	USD	CAD	JPY	JPY
7	6	4	5	8	7	

AUD	NZD
2	3
NZD	JPY
7	6

PIP Range1	57	39	16	16	25	24
Bid Ratio1	17.1%	39.0%	52.2%	42.0%	5.2%	12.3%

AUD	NZD
19	21
22.0%	25.6%

High1	GBP/JPY	GBP/CHF	NZD/USD	AUD/CAD	AUD/JPY	CHF/JPY	
	141.6280	1.6686	0.7022	0.9393	82.2400	84.9120	
	Ask1	141.2090	1.6667	0.7018	0.9388	82.0400	84.7320
	Bid1	141.1590	1.6662	0.7015	0.9384	82.0030	84.6980
Low1	141.0620	1.6647	0.7006	0.9377	81.9900	84.6680	

AUD/NZD	NZD/JPY
1.2839	64.0760
1.2833	63.9560
1.2824	63.9190
1.2819	63.8650

Match a strong with a weak currency.
Match a strong base currency with a correlated strong

CAN YOU BACKTEST THIS???



UNDERSTANDING STRENGTH, WEAKNESS, & VOLUME NOW THAT'S TRADING

- So, we showed you **THE EDGE.**
- Now all you have to do is believe what you've seen, because ...
- If you're trading without **FATMAN**, you're ...

... a **BLIND MAN.**



UNDERSTANDING STRENGTH, WEAKNESS, & VOLUME NOW THAT'S TRADING

Be sure to visit our website ...

<http://www.hawkeyetraders.com>

where you can...

- pick up our **FATMAN** indicator (and the rest of our great Hawkeye ChartTools)
- signup for our trading rooms
- and signup for our weekly newsletter