

KP DYNAMIC POWER BARS

INSTALLATION INSTRUCTIONS FOR BASIC and PREMIUM UPGRADE of KWIKPOP for NINJATRADER

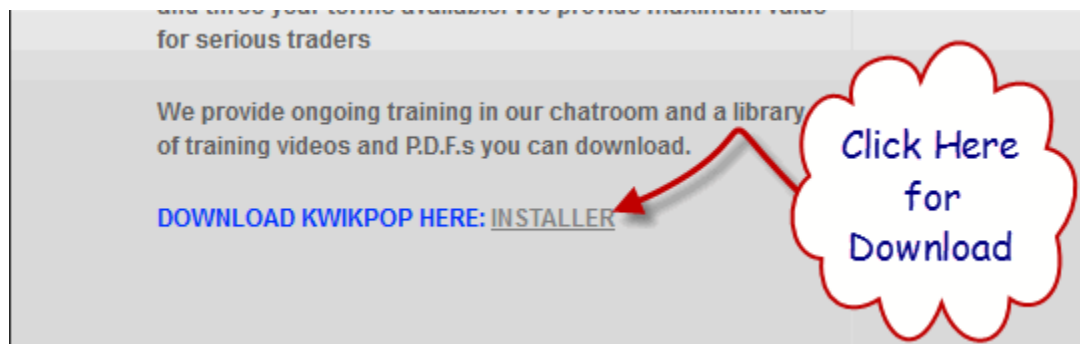
***Make sure that NinjaTrader is closed before you begin
the download***

Please print this document out. Follow these instructions for Update installation.

Download the Updated KwikPop with KP Dynamic Power Bars V66

Once you have initiated your KwikPop Subscription you are ready to download and install the KwikPop package.

Go to our web site <http://www.kwikpop.com> and scroll down on the Home Page until you see "Installer"



This will take you to the download page

Download KwikPop for NinjaTrader 32 Bit and 64 Bit Now!

This update is
for Ninja Trader
ONLY

At this point in the process, you will be prompted for your KwikPOP User Name and Password

Kwik*POP for NinjaTrader 7 Download

Enter your Kwik*POP username:

Enter your Kwik*POP password:

Verify Credentials

Enter User
Name

Enter
Password

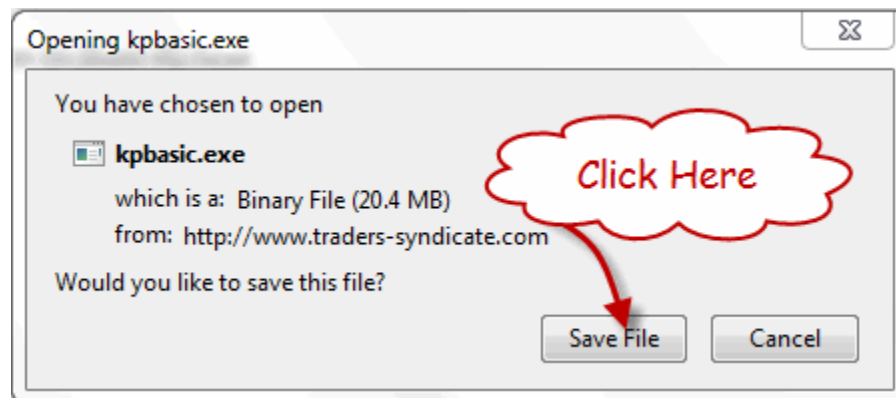
Enter your information and select "Verify Credentials". You will be automatically directed to the correct download link.

Kwik*POP for NinjaTrader 7 Download

Download KwikPop Basic for NinjaTrader 32 Bit and 64 Bit (Build 45) now!

Click Here

You will be prompted to save the download

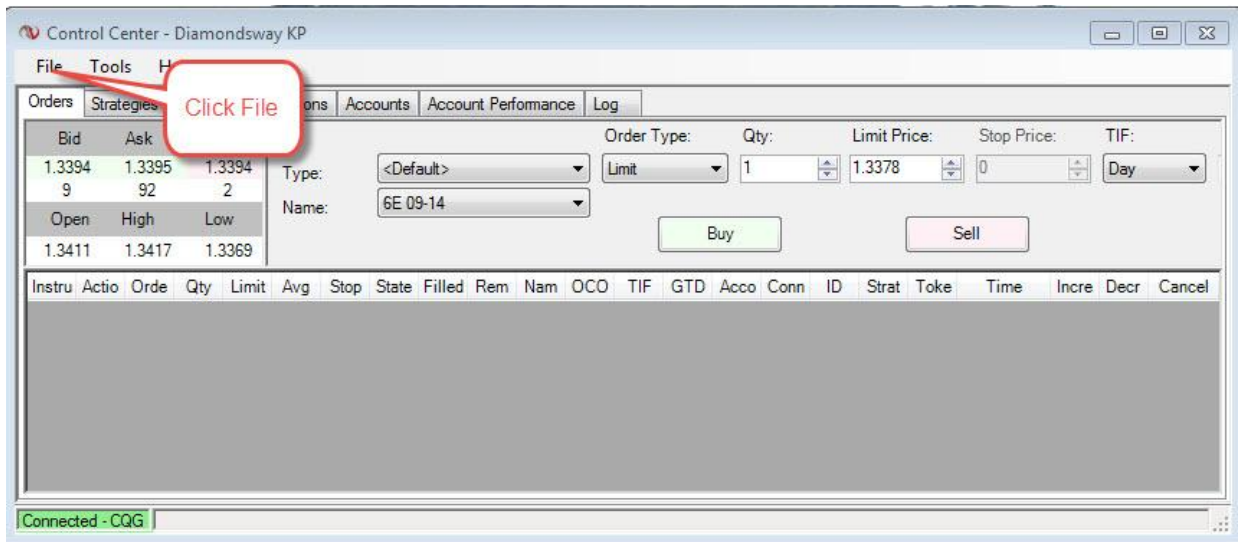


WWW.TRADING-SOFTWARE-COLLECTION.COM

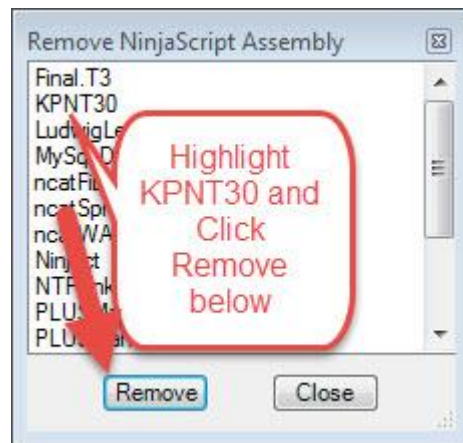
As soon as the download is completed Note where you have saved the file to.

You must first remove your existing version of Kwikpop in the following manner

- 1) Open Your Ninja Trader Control center Click File > Utilities > Remove Ninja Script Assembly

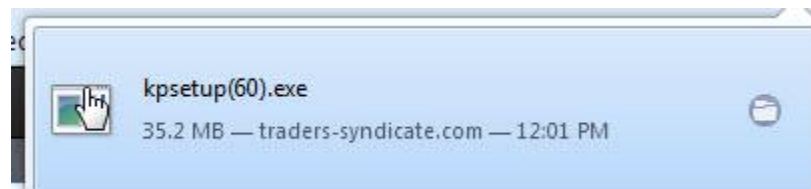


2) Highlight KPNT30 and Click the remove Button

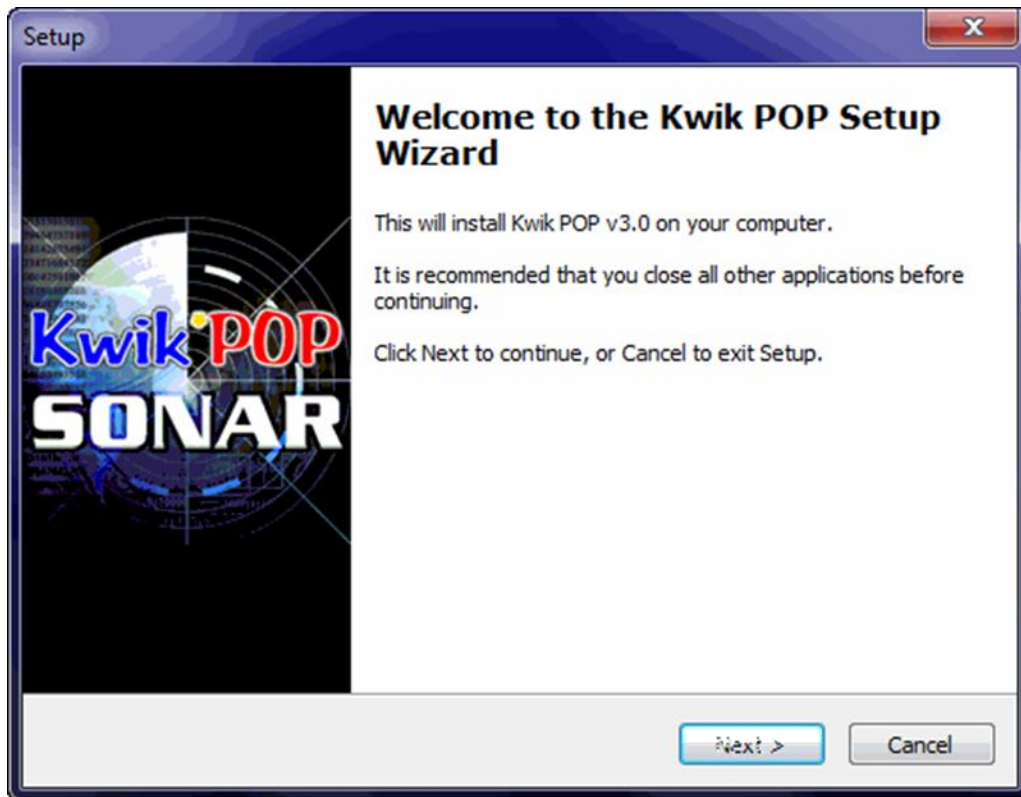


3) Shut Down Ninja Trader (IMPORTANT: Do not save workspaces or your workspace as charts will lose saved KP indicators)

4) Locate the saved Installation file you downloaded and double click on it to run.



The KwikPOP installer will open and continue the installation by clicking next. Just follow the default options and click Finish. This will complete the download of the KwikPop program and KP Dynamic Power Bars.



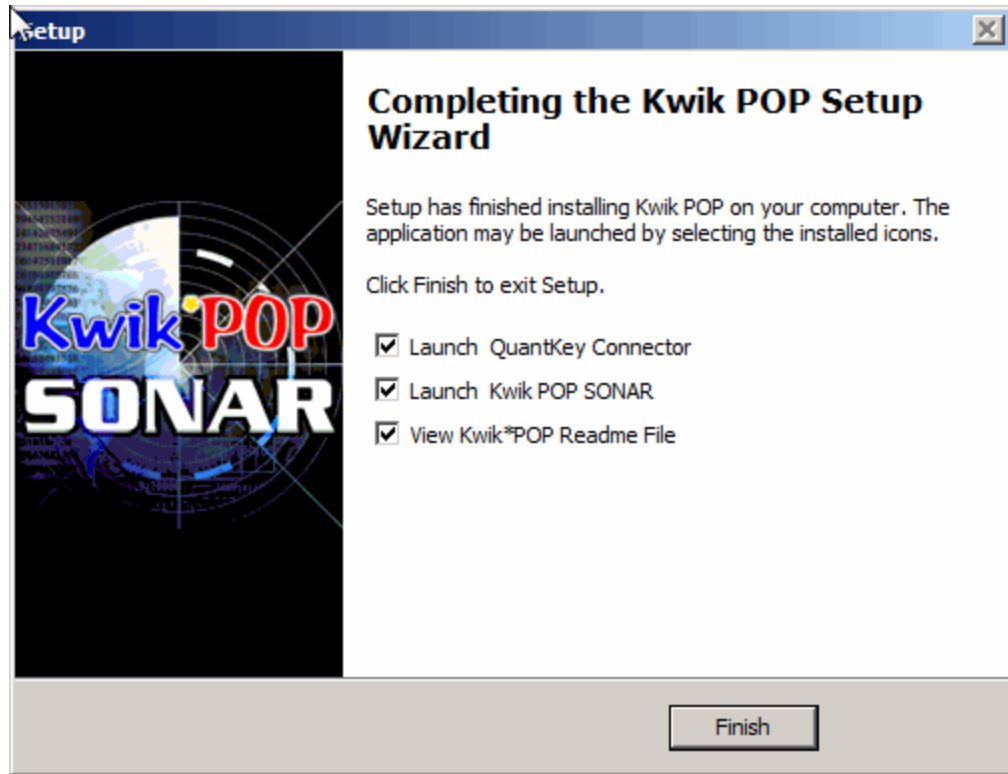
When the Installer is finished, you have the options of

Launch QuantKey Connector

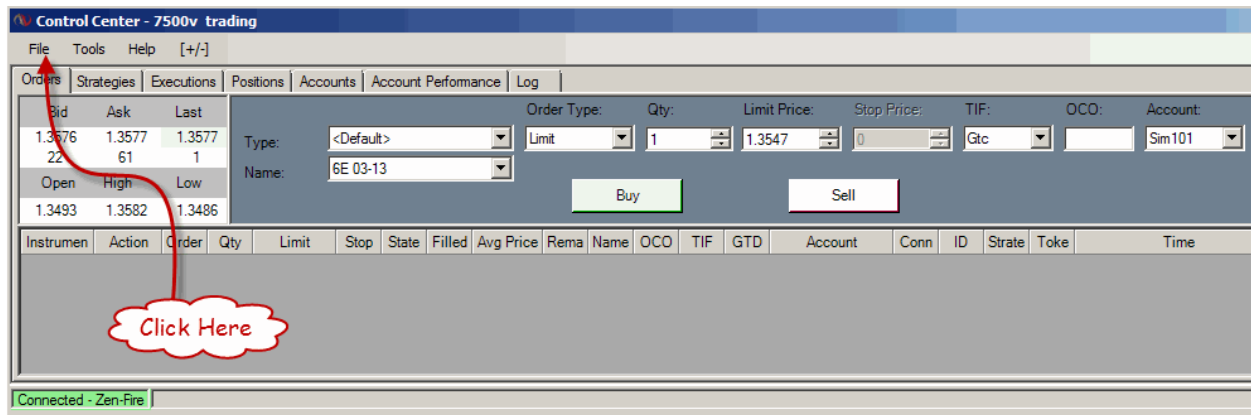
Launch KwikPop SONAR

View KwikPop Readme File --this is the same document that you are currently viewing. Uncheck this entry. You can locate this file in the KwikPop folder on your C: Drive if you need it in the future.

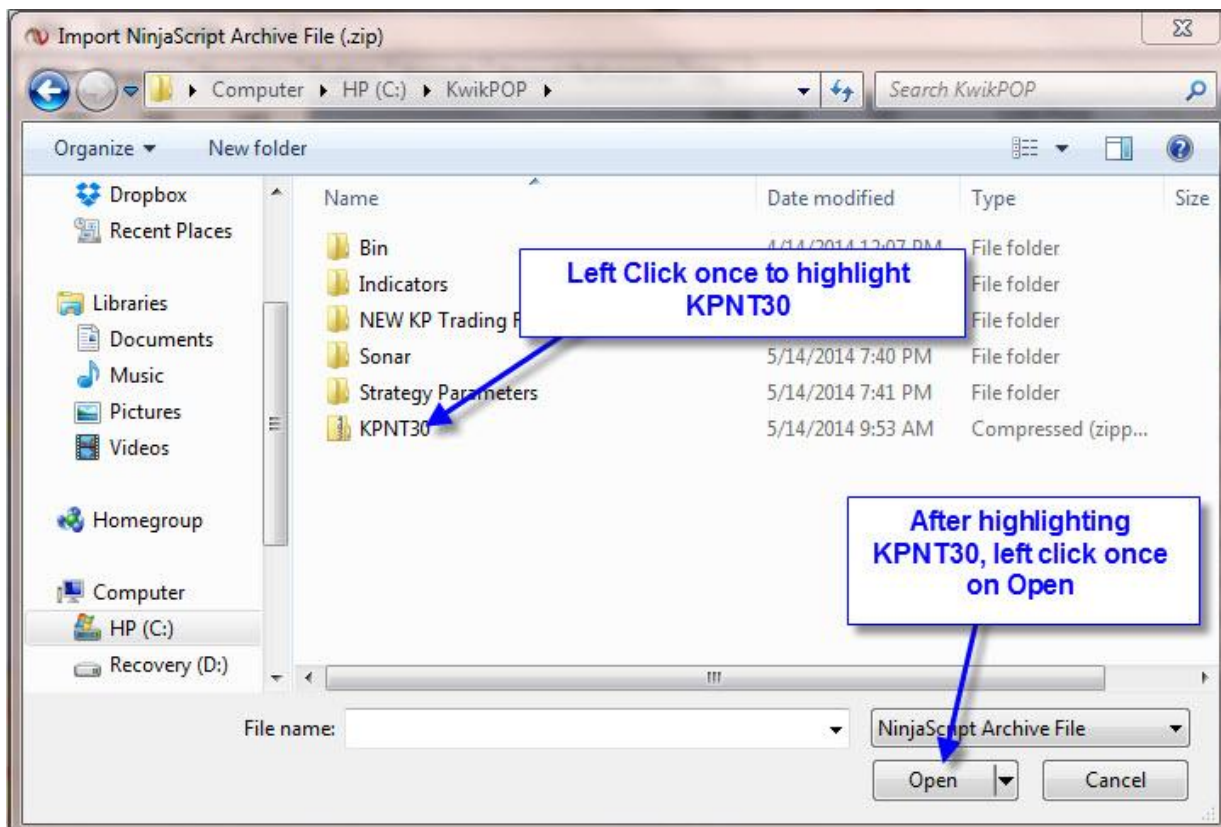
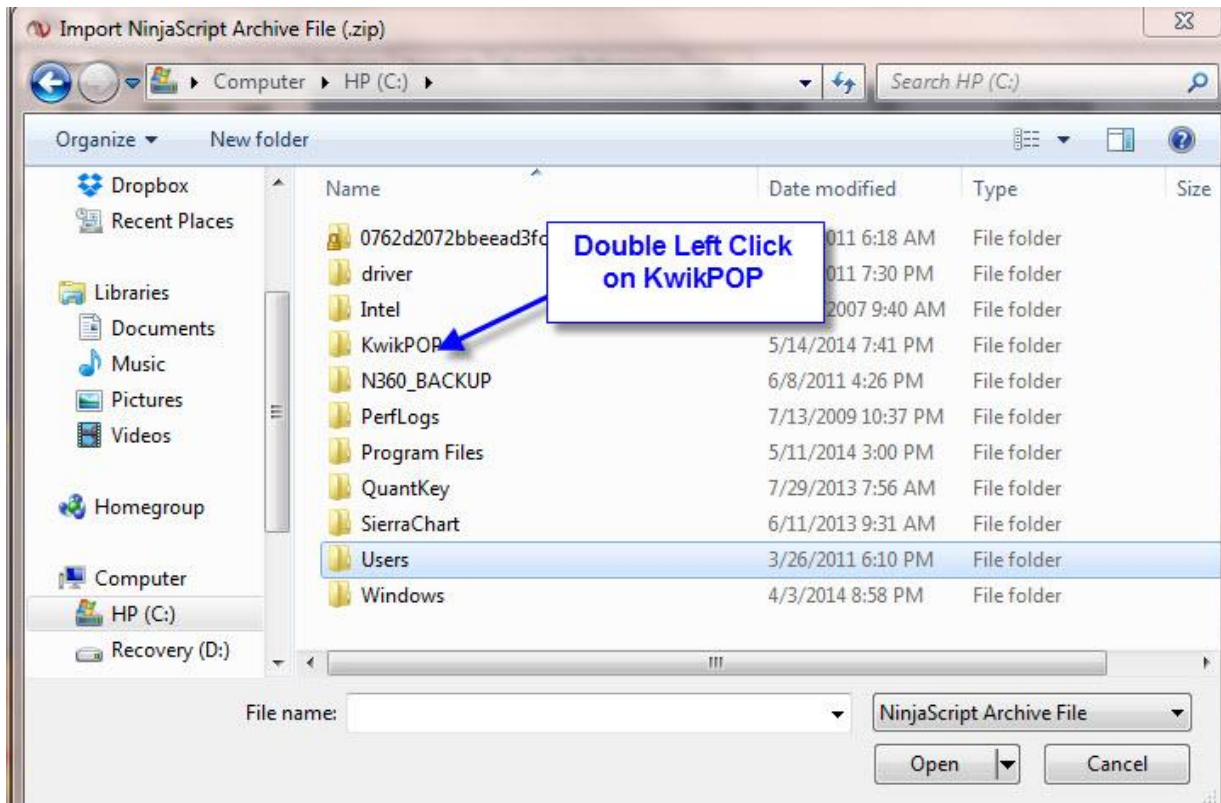
Click Next to Finish



Restart Ninja Trader and Import KwikPOP into NinjaTrader



Click on File—Utilities—Import the Kwikpop NinjaScript—Locate Kwikpop on your C: Drive in the left column and double left click on it



IMPORTANT NOTE: You must Restart Ninja Trader before installation will be completed; These two restarts of Ninja Trader are important now because you will be using the KP Dynamic Power Bars which are considered custom bar types: if you do not shut down after you remove the old assembly, it may not always let you import the new one because the old one is still running until restart. When you shut down, you must not save the workspaces, or they will be saved without KP (which is just removed). You need then to restart NT after importing the new version so it can cleanly open the workspaces with KP installed. Again here, it is important not to save the workspaces when you close or you will be saving them without KP and KP will not be on the charts when it is restarted. If you follow these Instructions all of your previous work should be intact when you complete the process

It is Now Time to Begin Working with Templates

Click on File in Control Center >Workspaces > New Workspace

Then click on File--New--Chart. The data series window opens and you then select the symbol you want for the new chart. In this case we will create a new ES Dynamic Power Bar chart.

The screenshot shows the 'Data Series' dialog box in NinjaTrader. The left pane shows a tree view of contracts, with 'ES 09-14 (KP Dynamic Power Bars 2-1)' selected. The right pane shows configuration options for the selected contract. Red callout boxes provide instructions for various settings and actions:

- Contract for Chart:** Points to the selected contract in the tree view.
- Choose KP Dynamic Power:** Points to the 'Type' dropdown menu, which is set to 'KP Dynamic Power Bars'.
- Set Power Value:** Points to the 'Dynamic Power' setting, which is set to '2'.
- Set days to Load:** Points to the 'Days to load' setting, which is set to '10'.
- Click Here to Load Contract:** Points to the 'New' button at the bottom left.
- Contract shows Here after Clicked below:** Points to the selected contract in the tree view.
- Set Session Template to 24/7:** Points to the 'Session template' dropdown menu, which is set to '<Use instrument settings>'.
- Click Here to Finish Setup:** Points to the 'OK' button at the bottom left.
- Select Template here:** Points to the 'Load the following Chart Template:' dropdown menu, which is set to 'KPDynamic Power Bar ES'.

The 'Data Series' dialog box contains the following settings:

Category	Property	Value
Period	Price based on	Last
	Type	KP Dynamic Power Bars
	1. Synchronizer	1
	2. New Bar	1
Chart Style	Chart style	KP Classic Candles
	Bar width	3
Data	Load data based on	Days
	Days to load	10
	End date	7/30/2014
	Session template	<Use instrument settings>
Visual	Auto scale	True
	Display in Data Box	True
	Label	ES 09-14
	Panel	1
	Plot session break line	True
	Price marker	True
	3. Dynamic Power	Data Series value.

Click on ES--14 (or current front month) to highlight it.

Click on New on the bottom.

You can edit the Parameters on the right side of the Data box to set up your chart.

For this example we will be setting up the KP Dynamic Power Bar ES Chart.

For type--left click in the box to the right of Type and use the Scroll arrow to select **KP Dynamic Power Bars**. In the box directly below the KP Dynamic Power Bars Change Power setting to **2** if not already entered.

In the Data section--

Set Days to Load a minimum of **10 Days**

Left click in the box to the right of Session Template (usually shows <Use Instrument Settings>

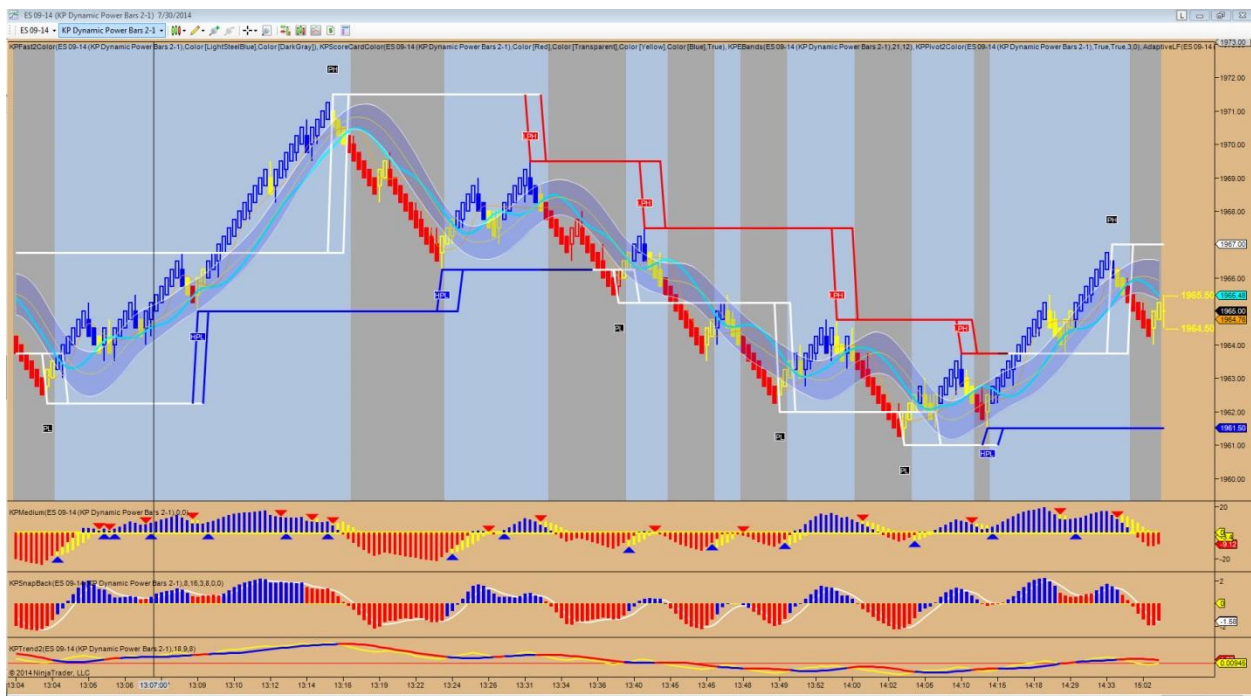
Left click on the down scroll arrow and select Default 24/7

Go to the bottom of the data window--Load the following Chart Template (Normally shows <None>)

Left click on the down scroll arrow and select KP Dynamic Power Bars ES

Click on OK and your chart will open.

The Chart should look similar to this example:



Repeat the above process for any other charts you want to add to this Workspace. When done--Click on File--Workspaces--Save Workspace as--give this Workspace a name you will recognize in the Save as window and click OK.

All of our other templates and setup are still included in this download and as such you should find all of your previous work intact, Should you have any Installation issues please feel free to get in touch with us and we will do our best to get it resolved or find someone that can.

Working our Past Settings with Templates

Click on File--Workspaces--New Workspace

Then click on File--New--Chart. The data series window opens and select the symbol you want for the new chart. In this case we will create a new CL Tone chart.

The screenshot shows the 'Data Series' dialog box with several annotations in red boxes and arrows pointing to specific elements:

- Contract for Chart**: Points to the 'CL 06-14' entry in the list.
- Chart Type**: Points to the 'Range' value in the 'Period' section.
- Chart value**: Points to the '4' value in the 'Value' field of the 'Period' section.
- Days of data to load**: Points to the '3' value in the 'Days to load' field of the 'Data' section.
- Set Session Template to 24/7**: Points to the '<Use instrument settings>' dropdown in the 'Session template' field of the 'Data' section.
- Click here to add contract**: Points to the 'New' button at the bottom left.
- Contract shows here after clicking**: Points to the 'CL 06-14 (4 Range)' entry in the list.
- Click here to finish setup**: Points to the 'OK' button at the bottom left.
- Select template here**: Points to the '<None>' dropdown in the 'Load the following Chart Template:' field at the bottom right.

Section	Property	Value
Period	Price based on	Last
	Type	Range
	Value	4
Chart Style	Chart style	Candlestick
	Bar width	3
	Candle outline	Black; 1px
	Color for down bars	Red
	Color for up bars	LightGreen
Wick	Wick	Black; 1px
	Wick	Black; 1px
Data	Load data based on	Days
	Days to load	3
	End date	5/3/2014
	Session template	<Use instrument settings>
	Session template	<Use instrument settings>
Visual	Auto scale	True
	Display in Data Box	True
	Label	CL 06-14
	Panel	1
	Plot session break line	True
	Price marker	True
	Price marker color	Black
	Scale justification	Right

Click on CL 06-14 (or current front month) to highlight it.

Click on New on the bottom.

You can edit the Parameters on the right side of the Data box to set up your chart.

For this example we will be setting up the CL Tone Trade Chart.

For type--left click in the box to the right of Type and use the Scroll arrow to select Range. In the box directly below the Range entry type in 4 if not already entered.

In the Data section--

Set Days to Load to (7)

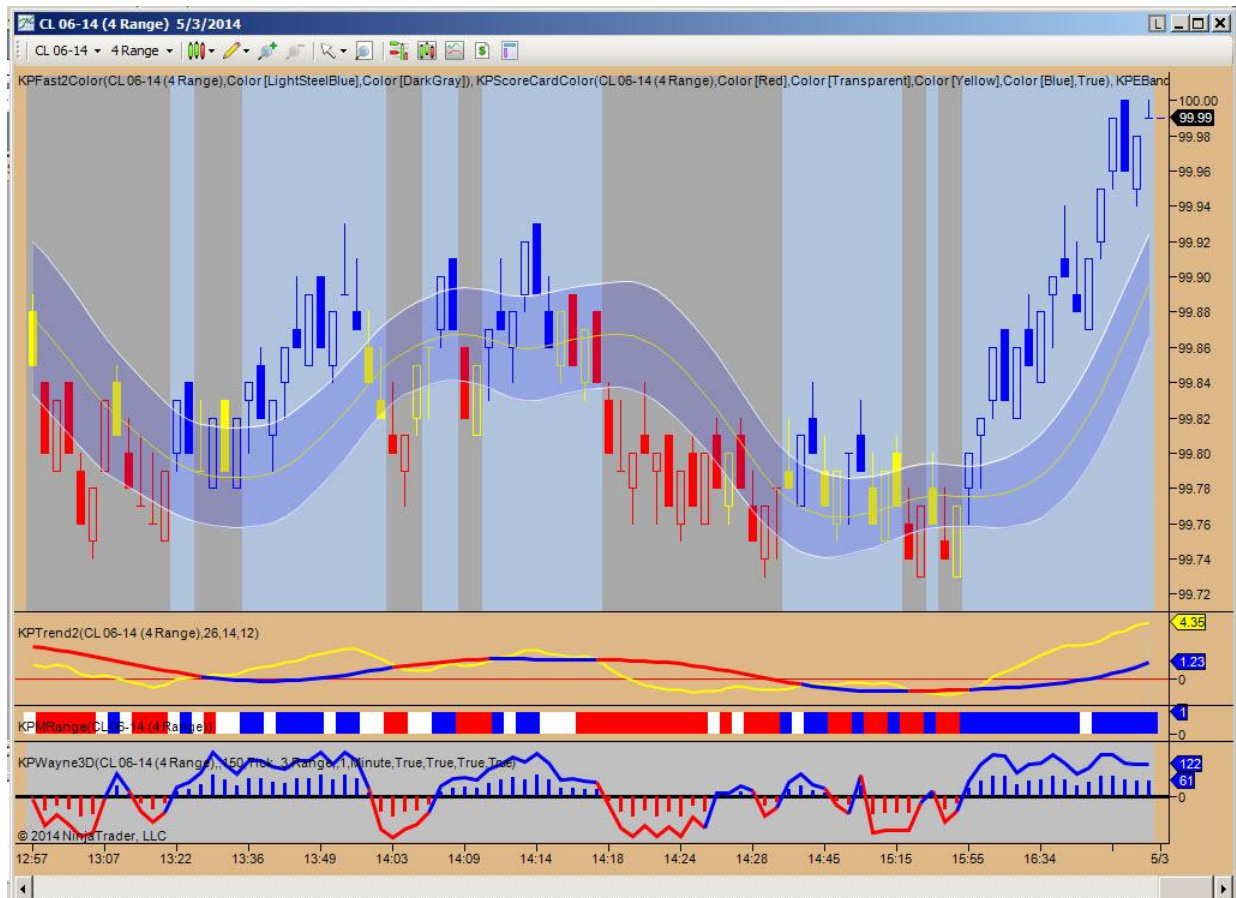
Left click in the box to the right of Session Template (usually shows <Use Instrument Settings>

Left click on the down scroll arrow and select Default 24/7

Go to the bottom of the data window--Load the following Chart Template (Normally shows <None>)

Left click on the down scroll arrow and select CL Tone

Click on OK and your chart will open.



Repeat the above process for any other charts you want to add to this Workspace. When done--Click on File--Workspaces--Save Workspace as--give this Workspace a name you will recognize in the Save as window and click OK.

Working with Workspaces

Click on File—Workspaces—Open Workspace

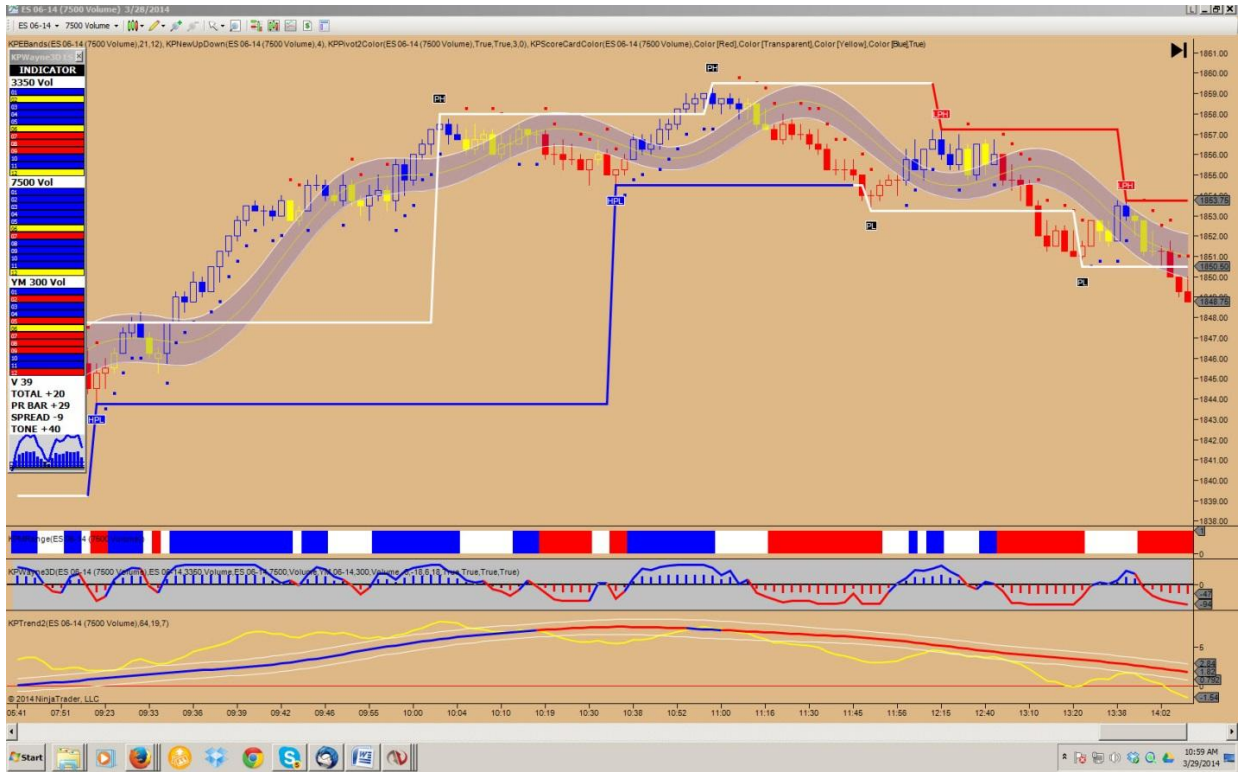
At this point select the type of trade you want to follow—we have (3)

KPPivot Trade—very conservative—only trades with the trend

KPMWAP Trade—aggressive—based on Range Bar charts—trades with and counter trend

KPTone Trade—aggressive—now available for the ES and CL markets—uses
KPWayne3DBox

You will find workspaces for the (3) types of trades—select one and the chart will open up. We have selected the KPTone Trade ES to start with. This will open a 7500 volume chart of the ES.

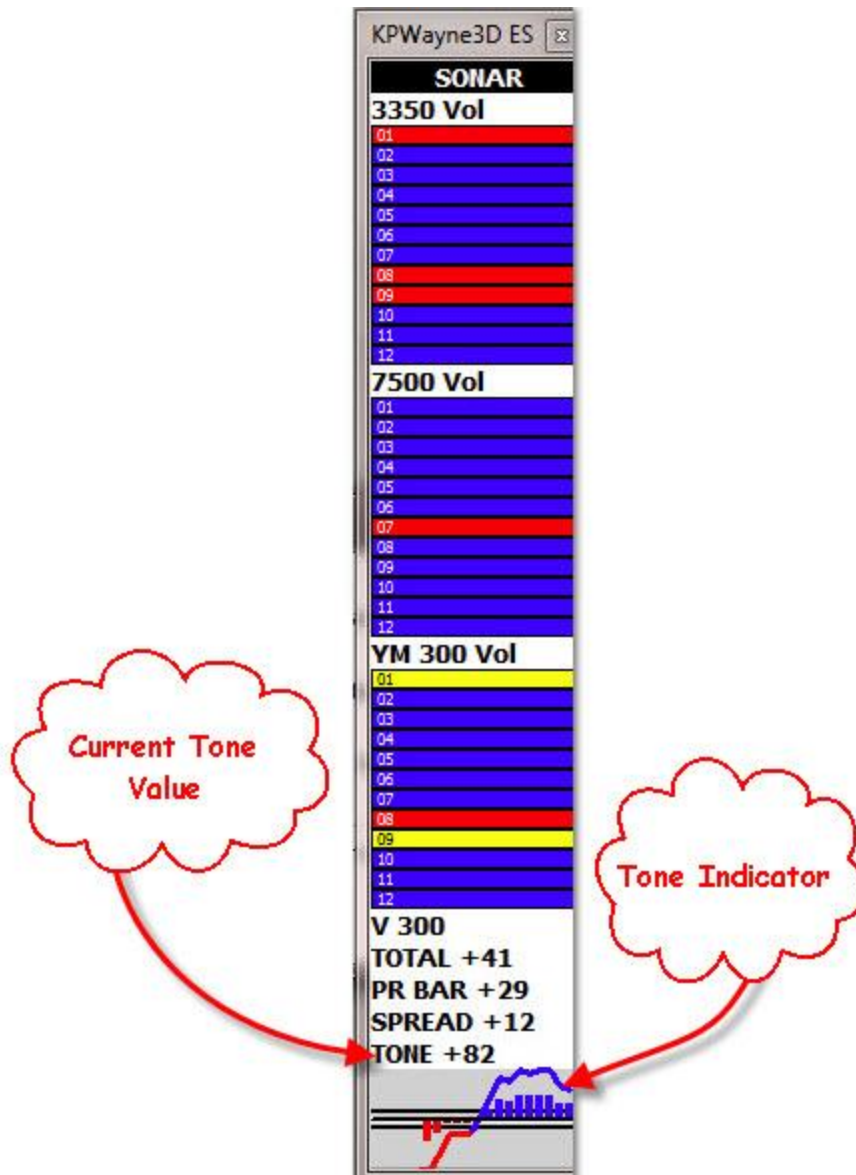


The other (2) trade type charts will plot the same way.

The KPWays3DBox is an important piece of the KPTone Trade. The 3DBox is a powerful tool that monitors (3) different time frames/markets using (12) KwikPOP indicators.

List of KwikPOP indicators in each section of the 3D Box

Row	Indicator
1	Pivot2Color
2	ScoreCardColor
3	Triggerline/Autostop
4	MWAP
5	Eband Center
6	Eband Outer
7	A900
8	Snapback1-Red or Blue
9	Snapback2 –if 8 is Blue and above smoothed line by more than .2=Blue, opposite if 8 is red
10	Trend2
11	Fast2
12	MRange



SONAR

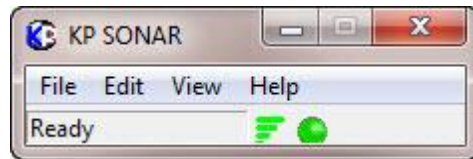
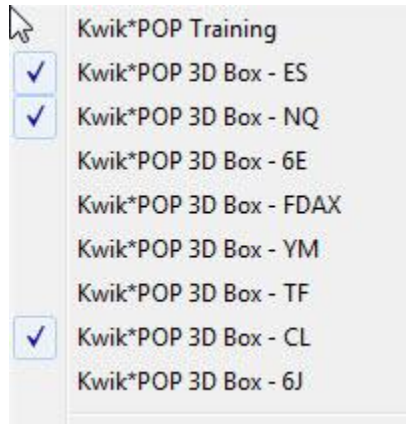
Sonar should also be on your Desktop. You will see 3D Boxes for individual markets--

Look on your desktop for the KwikPOP icon



Double click on the icon and the KP Sonar Control Center will appear.

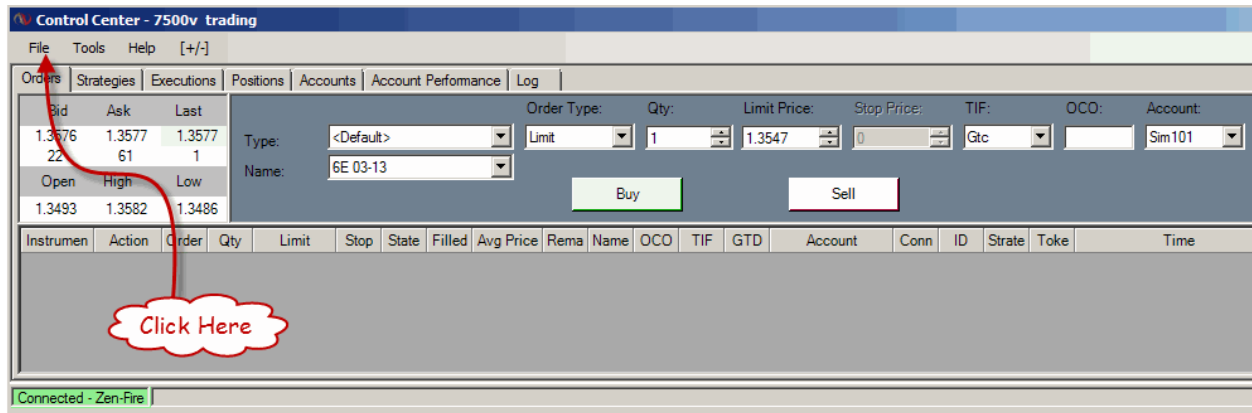
Now click on File in the KP Sonar Control Center and a pop-up window will appear with (8) 3D Box market options. Just click on the ones that you are interested in.



Other Options

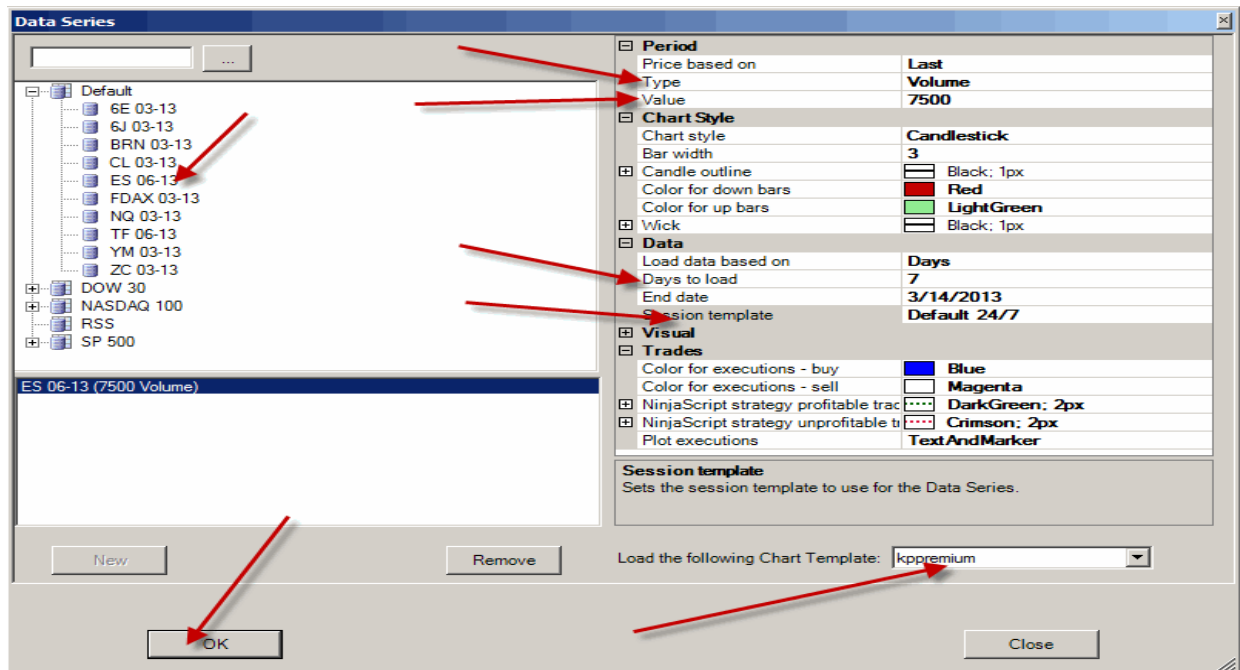
KwikPOP PREMIUM

Now open NinjaTrader and go to File > Workspace > New Workspace

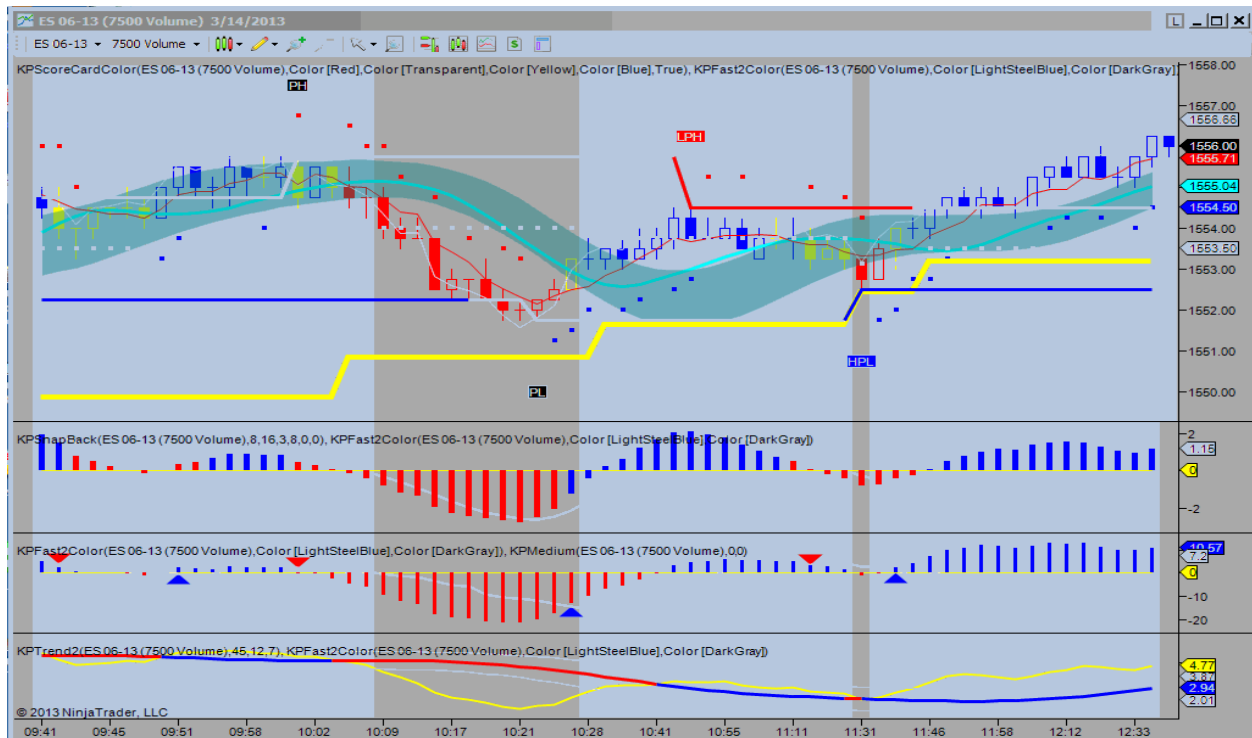


Click on File one more time and select New then Chart. The Data Series window will pop up. For our example, we are going to set up the 7500 vol chart for the ES.

Select the proper contract for the ES and click on new. This will place the ES current contract in the lower left window and the parameters on the right side. In the Period section, the type should be Volume and the Value should be 7500. Move down to Days to load and enter 7. Toggle Session template to read Default 24/7. Go to Load the Following Chart Template and select kppremium. Click OK.



Your chart should look like this.



You are now ready to use KwikPOP Premium

NOTE: KwikPOP Premium includes ALL of the markets and indicators provided in the (4) Basic packages. Follow the Basic instructions to use these features.

- | | |
|------------------------|----------------------|
| KWIK*POP Basic1 | ES & NQ |
| KWIK*POP Basic2 | 6E & FDAX |
| KWIK*POP Basic3 | YM & TF |
| KWIK*POP Basic4 | CL & 6J |

You are now ready to set up your charts. Following are the different time frames for the (8) markets that make up the Basic packages.

ES 7500 volume

NQ 610 tick

YM 444 volume

TF 600 volume

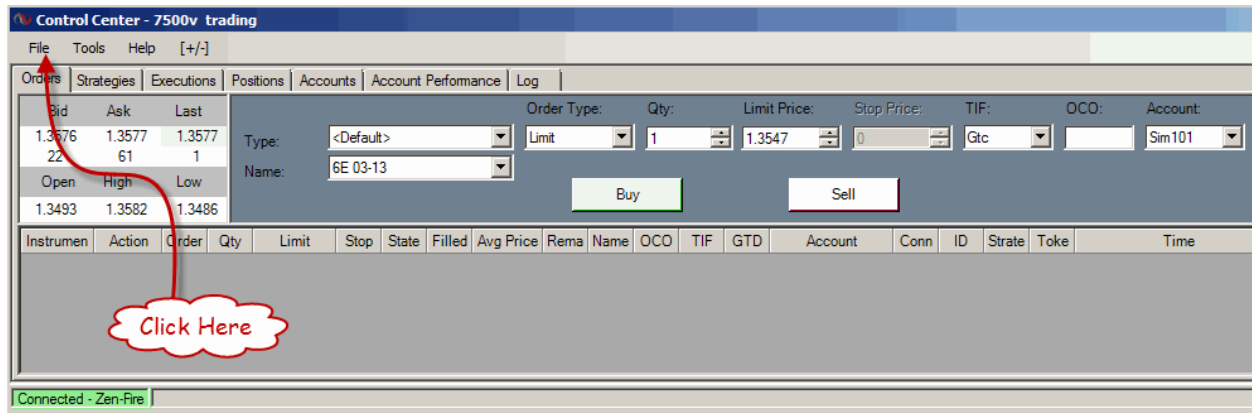
6E 1000 volume

FDAX 695 volume

6J 555 volume

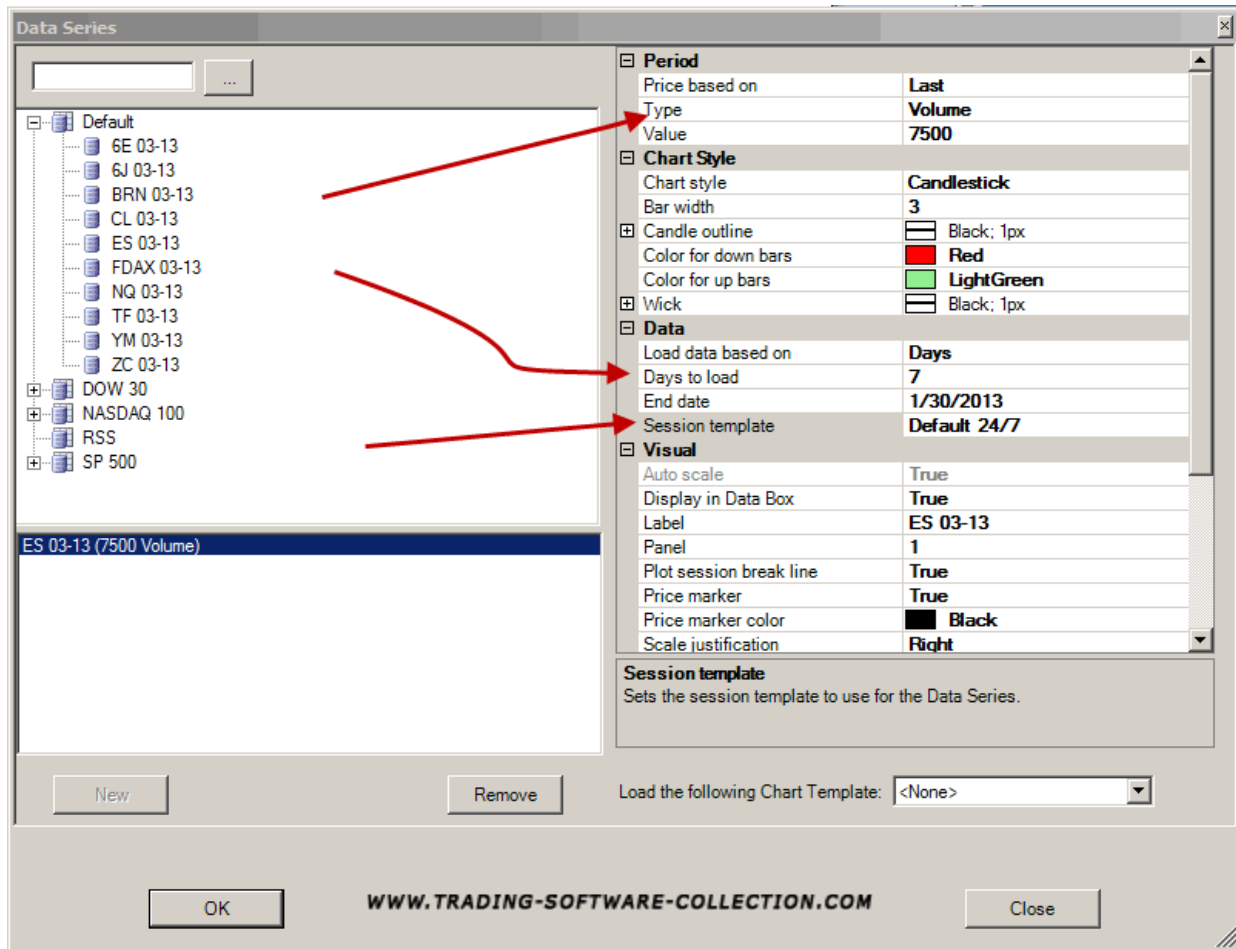
CL 2 minute

Now go to File > Workspace > New Workspace



Click on File one more time and select New then Chart. The Data Series window will pop up. For our example, we are going to set up the Basic 1 workspace consisting of a 7500 volume chart of the ES and a 610 tick of the NQ. For Basic 2, 3 and 4, just substitute the proper symbols and time frames.

Select the proper contract for the ES and click on new. This will place the ES current contract in the lower left window and the parameters on the right side. In the Period section, the type should be Volume and the Value should be 7500. Move down to Days to load and enter 7. Toggle Session template to read Default 24/7. Click OK.



You now will have a simple 7500 volume chart of the ES without any indicators.



Right click on the chart and select Indicators. Looking at the upper left corner of the Indicator window, scroll down to KPTemplateBasic and left click once to highlight it and select New.

The first time you apply Kwik*POP to a chart you will be prompted for your **UserName** and **PassWord**. Enter this information that you received in the email after you started your subscription.

Repeat the above steps for the NQ 610 tick chart. Type should be Tick and the Value 610.

You should now have 2 charts on your screen. A 7500 volume chart of the ES and a 610 tick chart of the NQ. It should look like this.

Now, once again click on File > Workspace > save workspace as --Enter a name that you prefer and click OK.

KNOWN ISSUES

QuantKey.exe is an internet application. Obviously, it is a new application and as such, some Anti-Virus programs will classify it as a threat as there are no known files on the application. As more users activate QuantKey the search engine/anti-virus data base will expand and the threat level will drop and eventually go away. If your antivirus program triggers an alert allow your ant-virus program to accept QuantKey.exe. Most programs have a simple process for accepting files, but Norton is a little more difficult.

If you use Norton 360, follow these steps.

1. From the Norton 360 main screen, click on Settings, then AntiVirus. On the index tab Scans and Risks, scroll down, and under Exclusions / Low Risks, click Configure to the right of Items to Exclude from Scans. Click Add, then type "C:\KwikPOP" (without the quotes), then Add again, and "C:\QuantKey". Click OK.
2. On the next item down, which is Items to Exclude from Auto-Protect and SONAR Detection, click Configure at the right, and Add, then "C:\KwikPOP" and Add, and "C:\QuantKey", then OK.

These two steps tell Norton 360 not to continuously rescan these directories, which contain files required by Kwik*POP.

3. Then, to install Kwik*POP, right click on the Norton 360 icon in your system tray, and select Disable Antivirus Auto-Protect, and accept the default of 15 minutes. This tells Norton 360 not to block the installer we are about to download.

4. Download and run the file <http://www.traders-syndicate.com/kpsetup.exe> from your browser such as Internet Explorer. If you are prompted for actions, click Actions, then Run anyway, or More options then Run Anyway if you see More options instead.

At this time the programs are installed and you can right click on Norton 360 in your system tray and Enable Antivirus Auto-Protect (or reboot, if you prefer) which puts everything back the way it was and the programs should be good to go.

